

## About This Manual

This manual is your introduction to the Kimosetter 340 RIP 2.0, a Macintosh software RIP to work with Kimosetter 340, a plate setter, and Kimosetter 340i, a film setter. Use the manual now to set up and begin working with your Kimosetter. Use it later as a reference for everyday routines and as a guide to better understand the functions available.

---

### How to use this operation manual

---

#### Symbols



The caution symbol gives you alerts and restrictions for using the RIP correctly. Please read carefully to avoid improper operation.



The memo symbol gives you useful information for your reference when using RIP and reading is recommended.

---

#### Trademarks

Adobe, PostScript, PostScript 3, and PostScript logos are trademarks or registered trademarks of Adobe Systems Incorporated.

Apple, Macintosh, Power Macintosh, and Mac OS are trademarks or registered trademarks of Apple Computer, Inc.

Other brand names and product names are trademarks or registered trademarks of their respective companies.

---

#### Software copyright

© 2001 Amiable Technologies, Inc. All Rights Reserved.

© 2001 Adobe Systems Incorporated. All rights reserved.

© 2001 ALPS ELECTRIC CO., LTD.

---

#### Regarding this manual

1. Reproduction of any part of this operation manual without prior permission is prohibited.
2. The contents of this operation manual are subject to change without notice.
3. Great care was taken in making this manual. However, if you find any inconsistencies, errors or omissions in this manual, please don't hesitate to contact your supplier.
4. Regarding the content of this manual, please understand that we will not accept any liability whatsoever for any resulting operational damage as well as direct, indirect, exceptional, and accidental operational damage regardless of Clause 3.

*Manual copyright*

---

© 2001 Amiable Technologies, Inc. All Rights Reserved.

© 2001 ALPS ELECTRIC CO., LTD.

# Contents

<b>About This Manual</b> .....	<b>1</b>
<b>How to use this operation manual</b> .....	<b>1</b>
Symbols .....	1
Trademarks .....	1
Software copyright .....	1
Regarding this manual .....	1
Manual copyright .....	2
<b>Chapter 1. Set Up</b> .....	<b>5</b>
<b>System Requirements</b> .....	<b>5</b>
<b>To install program</b> .....	<b>5</b>
<b>To install screen fonts</b> .....	<b>9</b>
<b>To connect the Kimosetter 340/340i to your computer</b> .....	<b>11</b>
USB connection .....	11
SCSI connection .....	11
<b>Attach hardware key</b> .....	<b>11</b>
For USB: .....	11
For ADB: .....	11
<b>To set up the printer</b> .....	<b>12</b>
<b>To uninstall RIP</b> .....	<b>16</b>
<b>Chapter 2. Functions of the RIP</b> .....	<b>17</b>
<b>Print Monitor</b> .....	<b>17</b>
Function of each button .....	17
Information display .....	18
Menu .....	19
<b>Setup Properties</b> .....	<b>20</b>
General tab .....	20
Port tab .....	20
Print tab .....	21
Color Adjust tab .....	22
<b>Driver Options</b> .....	<b>22</b>
Offset adjustment .....	22
Ribbon Information .....	23
<b>Density Curve Adjustment</b> .....	<b>24</b>
Function of each button .....	24
Create and Edit Density curve .....	25
<b>Preferences</b> .....	<b>26</b>
<b>Chapter 3. Printing</b> .....	<b>27</b>
<b>Printing files without opening the application on which they were created</b> .....	<b>27</b>
<b>Printing from the application on which the file was created.</b> .....	<b>29</b>
<b>To print from PageMaker6. 5</b> .....	<b>31</b>
<b>Appendix A About Offset Adjustment</b> .....	<b>33</b>
<b>Appendix B List of Fonts</b> .....	<b>35</b>

# MEMO

## Chapter 1. Set Up

### System Requirements

The following systems are required for using Kimosetter 340 RIP 2.0.

	Minimum system	Recommended system
Processor	Power PC 601 90 MHz	Power PC G3 233MHz
Memory space	64MB (virtual memory=128MB)	More than 128MB (virtual memory=256MB)
Installation space	90MB	90MB
Disk space	More than 1GB	More than 2GB (for saving data)
OS	Mac OS 8.1 or later	Mac OS 8.1 or later
Video system	14 inch monitor, 256 colors	17 inch monitor, more than Thousands colors
Peripheral devices	CD-ROM drive	CD-ROM drive
Interface	SCSI or USB (Mac OS 8.5 or later)	SCSI or USB (Mac OS 8.5 or later)

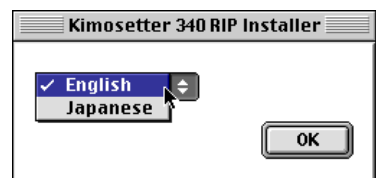
### To install program

Install the program from the CD-ROM .

1. Insert the CD-ROM in your computer.
2. Double-click the **Kimosetter 340 RIP Installer** icon.

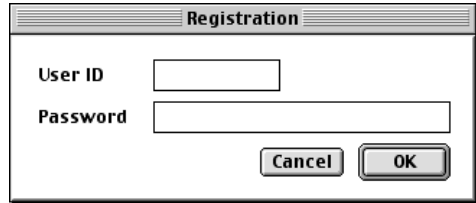


3. Select language.



4. Input password.

Input user ID (6 digits) and password (20 digits) that come with the hardware key, and click **OK**. When inputting password do not use "-" (hyphen).



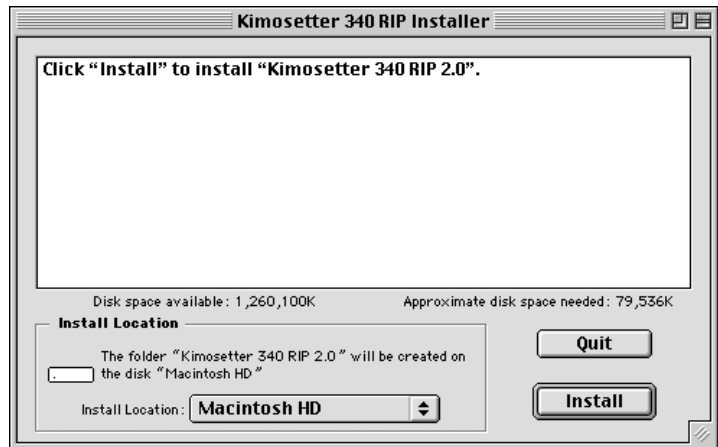
5. Confirm the product name.

The **Installation Options** dialog appears. Click **OK**.



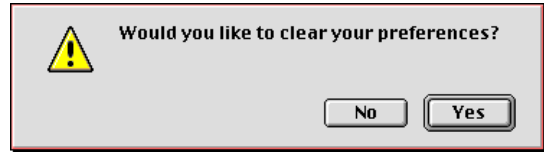
6. Select location to install.

Select the location to which to install the software in the **Kimosetter 340 RIP 2.0 Installer** dialog and click **Install**.

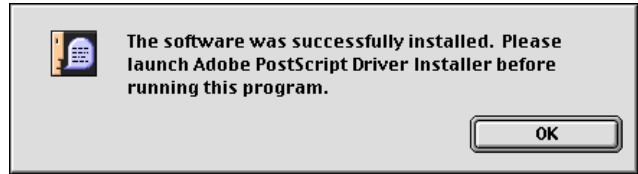


**7.** Clear preferences.

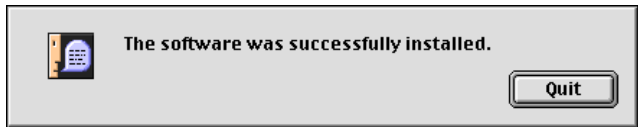
The message asks you if you would like to clear the '**Kimosetter 340 RIP 2.0**' preferences. Click **Yes**.

**8.** Confirm message.

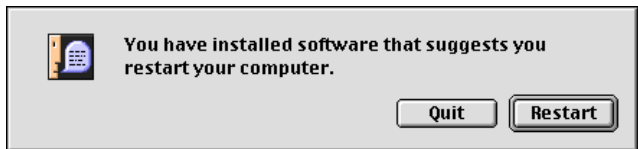
The install message for Adobe PostScript Driver appears. Click **OK**.

**9.** Finish installation.

The message tells you that the installation has been completed. Click **Quit**.

**CAUTION**

If a message for restart appears, do not restart and click **Quit**. Restart after installation of Adobe PostScript Driver finishes.

**10.** Install Adobe PostScript Driver.

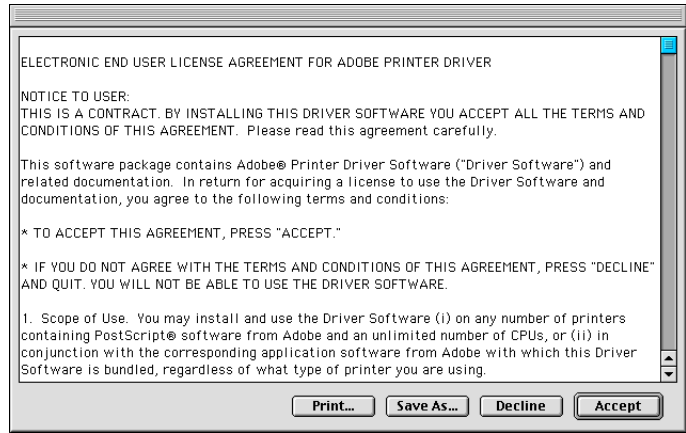
Open the '**AdobePS Installers**' folder in the CD and double-click the **AdobePS Installer** icon.

**CAUTION**

The Adobe PostScript Driver is AdobePS8.6. If this has already been installed, it is not necessary to install it again.

**11.** Read license agreement.

If **Continue** is clicked following the instructions on the screen, the **ELECTRONIC END USER LICENSE AGREEMENT FOR ADOBE PRINTER DRIVER** appears. If you accept the term of the License after reading through the License Agreement, click **Accept**.



**12.** Select location to install.

Select the location to install to on the **AdobePS Installer** dialog and click **Install**.



**13.** Confirm message.

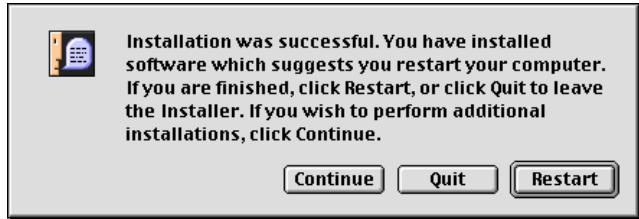
Confirm the message and click **Continue**.





**14.** Finish installation and restart.

The message tells you that the installation has been completed. Click **Restart** to restart your Macintosh.



The next step is to install screen fonts you are going to use on the applications.

**To install screen fonts**

When the Kimosetter RIP 2.0 was installed, 117 typestyles of Adobe Type 1 and 19 typestyles of TrueType were already installed in the folder of the RIP program. In order to use these fonts in the application you will have to install their screen fonts in the system folder using PS3 Fonts Installer.

**CAUTION**

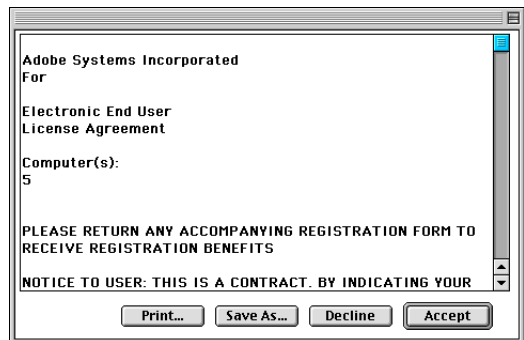
- If your Macintosh system has the TrueType screen fonts of Times, Helvetica, Courier, Symbol, the installer will replace them with Adobe Type 1 version.
- In the default setting, AdobePS Driver will substitute the following 3 fonts; Times for New York, Helvetica for Geneva and Courier for Monaco. If you do not want to substitute these fonts, uncheck "Substitute Fonts" in the "PostScript Options" tab in the Page Setup menu.

**1.** Open the 'Screen Fonts > Roman' folder in the CD.

Double-click the **PS3 Fonts Installer**.

**2.** Read license agreement.

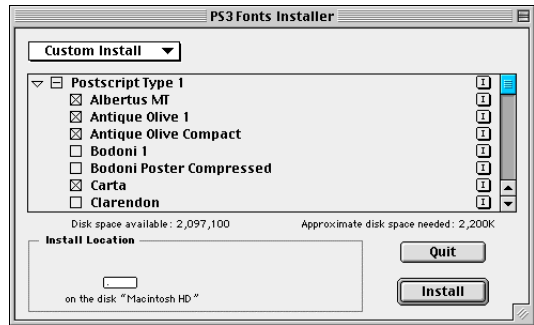
The **Electronic End User License Agreement** appears. If you accept the terms of the license after reading through the license agreement, click **Accept**.



---

**3.** Select font to add.

Select **Custom Install** to check the fonts to add and click **Install**.



If Easy Install is selected, all fonts will be installed. Select Custom Install to install specified fonts to use.

---

**4.** Restart.

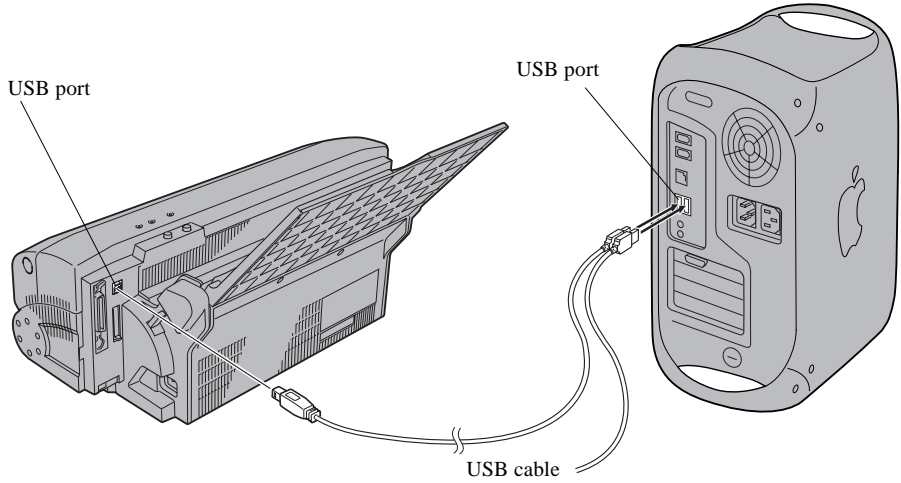
Click **Restart** to restart the Macintosh.

**The software installation is complete. Now proceed to hardware connection.**

## To connect the Kimosetter 340/340i to your computer

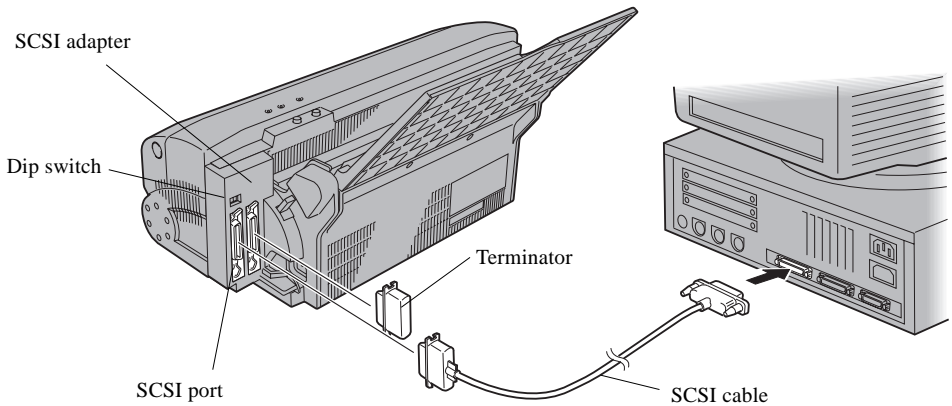
Connect the Kimosetter 340/340i to your computer as described in Chapter 1 'Connecting USB cables for Macintosh' or 'Connecting SCSI cables for Macintosh' in the Kimosetter 340/340i User's Guide.

### USB connection



### SCSI connection

A SCSI Adaptor (option) is necessary.



## Attach hardware key

Attach a hardware key supplied with the Kimosetter 340 RIP 2.0.

### For USB:

Attach a hardware key to a USB port on either of the computer or the keyboard. In case there is no USB port left for the hardware key, you can use a USB hub.

### For ADB:

Attach a hardware key to an ADB port on the keyboard. Be sure to restart the computer after the hardkey is connected.



If you have not restarted the computer after the ADB hardware key was connected, a message "The application requires that a hardware key be installed, but none was found" may appear.

**To set up the printer**

Set up the printer by starting up RIP.

**MEMO**

Kimosetter 340 RIP 2.0 enables you to print not only directly from the Macintosh where the RIP is installed but also from other Macintosh connected on the network.

**1. Start up RIP.**

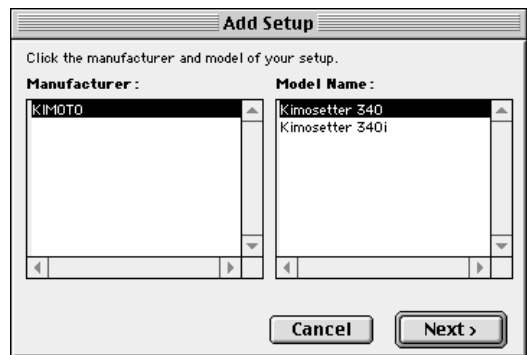
Double-click the **Kimosetter 340 RIP 2.0** icon.

**MEMO**

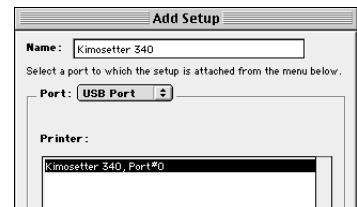
When the installation of Kimosetter 340 RIP 2.0 is completed, the **Kimosetter 340 RIP 2.0** icon will appear on the desktop.

**2. Select a model name.**

Select either Kimosetter 340 or Kimosetter 340i and click **Next**.

**3. Choose port.**

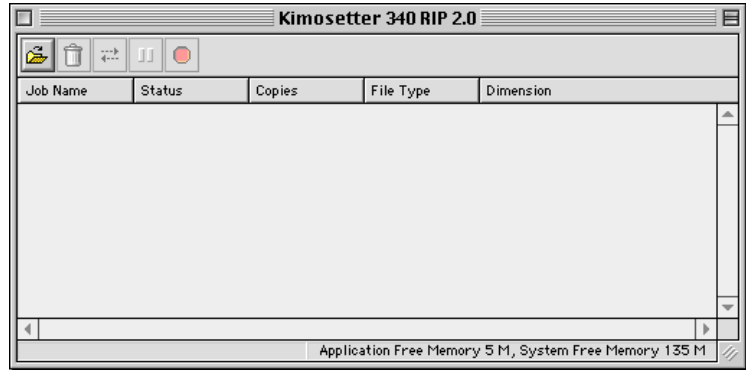
Choose the port (SCSI port or USB port) to which the printer is currently connected on the **Add Setup** dialog. When a port is selected, the connected printer name will be displayed. Select the printer to use in the list and click **OK**.

**MEMO**

You are recommended to use the default Name. When you need to change a name (eg. 2 Kimosetters on the network) use no more than 28 characters.

**4.** Confirm RIP start up.

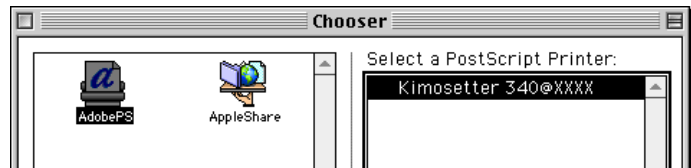
The Print Monitor is displayed.

**5.** Select AdobePS.**5-1** Printing from the computer in which RIP is installed.

Open **Chooser** from the **Apple Menu** to select **AdobePS**.

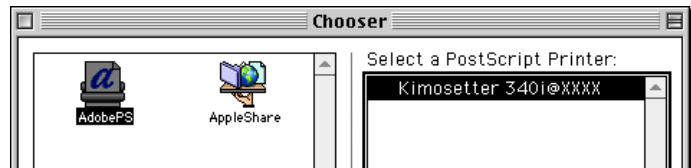
If you are using Kimosetter 340

Select **Kimosetter 340@xxxx** from the printer list in **Select a PostScript Printer** and click **Create**.



If you are using Kimosetter 340i

Select **Kimosetter 340i@xxxx** from the printer list in **Select a PostScript Printer** and click **Create**.

**MEMO**

A character string 'xxxx' stands for the name of computer where the RIP is installed. To verify the name see the File Sharing in the Control Panels.

**5-2** Printing from a Client Computer.

Copy the PPD file 'AmKMT340A.PPD' and 'AmKMT340Ai.PPD' in the 'Printer Descriptions' folder on the CD-ROM to 'System Folder > Extensions > Printer Descriptions' folder of the client computer.

Open **Chooser** from the **Apple Menu** and select **AdobePS**.

If you are using Kimosetter 340

Select **Kimosetter 340@xxxx** from the printer list in **Select a PostScript Printer** and click **Create**.

If you are using Kimosetter 340i

Select **Kimosetter 340i@xxxx** from the printer list in **Select a PostScript Printer** and click **Create**.

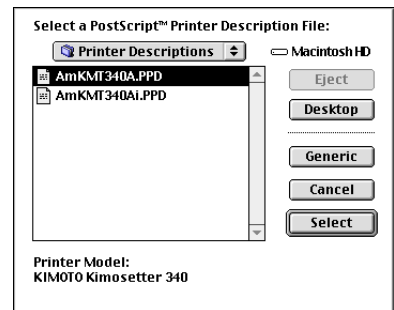
**MEMO**

A character string 'xxxx' stands for the name of computer where the RIP is installed. To verify the name see the File Sharing in the Control Panels.

**6.** Select the PPD file.

If you are using Kimosetter 340

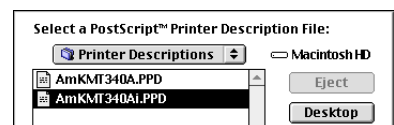
Click **Select PPD** then select 'AmKMT340A.PPD'. The PPD file is located in 'System folder > Extensions > Printer Descriptions'. The desktop icon **Kimosetter 340@xxxx** will appear.



Kimosetter 340@XXXX

If you are using Kimosetter 340i

Click **Select PPD** then select 'AmKMT340Ai.PPD'. The PPD file is located in 'System folder > Extensions > Printer Descriptions'. The desktop icon **Kimosetter 340i@xxxx** will appear.



Kimosetter 340i@XXXX

---

7. Close Chooser.

---

8. Test print.

It is recommended to check if the printer will print a test page correctly.

---

8-1 Install the ink cartridge.

Set the appropriate Ink cartridges as instructed in the User's Manual.

---

8-2 Load media.

Set **Kimoplate e<sup>2</sup>** in the sheet feeder of Kimosetter 340 (or **Kimolec TH** for Kimosetter 340i) as instructed in the Kimosetter 340/340i User's Guide. The media size required for this test page is 210 x 297mm or larger.

---

8-3 Perform test print.

Choose **Test Print** from the **Setup** menu, and the Kimosetter will start printing a test page. Check your printout.



---

## To uninstall RIP

To uninstall the RIP, follow these procedures.

- 
1. Close the Print Monitor.

If the RIP is active, close the Print Monitor or choose **Quit** from the **File** menu.

- 
2. Drag the **Kimosetter 340 RIP 2.0** icon to the Trash.

Drag the **Kimosetter 340 RIP 2.0** icon from the desktop to the Trash.

- 
3. Drag the **'Kimosetter 340 RIP 2.0'** folder to the Trash.

- 
4. Open the **'System Folder'**.

- 
5. Open the **'Preferences'** folder.

Drag **'Kimosetter 340 RIP Preferences'** and **'Kimosetter 340 RIP 2.0 Prefs'** to the Trash.

- 
6. Open the **'Extensions'** folder.

Drag **'Am\_Kimosetter 340'**, **'E3ITF'**, **'MacHaspUsbDD'**, **'RainbowUSBSHim'** and **'USBSentinel'** to the Trash.



**'MacHaspUsbDD'**, **'RainbowUSBSHim'** and **'USBSentinel'** may not be present, depending on the system environment.

- 
7. Open **'Extensions>Printer Descriptions'**.

Drag **'AmKMT340A.PPD'** and **'AmKMT340Ai.PPD'** to the Trash.

- 
8. Restart computer.

- 
9. Empty the Trash while holding down the **option** key.

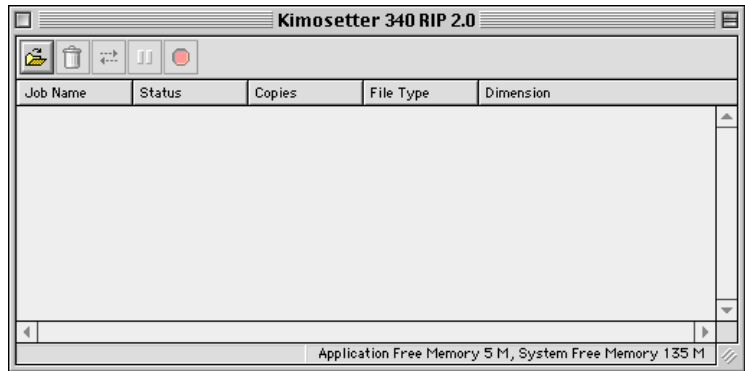


## Chapter 2. Functions of the RIP

This chapter gives a brief explanation about functions of the Kimosetter RIP 2.0.

### Print Monitor

Double-click the desktop icon of **Kimosetter 340 RIP 2.0**, and the Print Monitor will appear. The print monitor allows you to manage the print jobs.



### Function of each button



#### Add Job

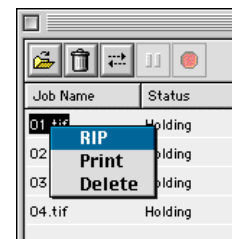
Click this button to add jobs. Select the file to be added and click **Open**. The file formats supported are JPEG, TIFF, PDF, PostScript and EPS. The newly added job will be listed on the Print Monitor with the status as **Queue**. If it is a PostScript file, the printing procedure is up to which option you have selected, **Print** or **Hold**, as **After spooling** on AdobePS Driver. (**File > Print > Printer specific options > After spooling**)

To print jobs of Queue status, select the files and click **Print**.



RIP is an acronym for Raster Image Processor. It creates dot-by-dot representations from the file to form the final printed output. RIPing requires rather high performance of the computer; the RIPing time depends on the computer and the file size.

If you hold down the mouse button on a job, the following pop-up menu will appear.



**RIP:** To carry out RIP processing for the job.

**Print:** To carry out printing for the job.

**Delete:** To delete the job.



**Delete**

This deletes jobs. Select a file or files from the list on the Print Monitor and click **Delete**.



**Print**

This starts printing. Select a file or files from the list on the Print Monitor and click **Print**.



**Pause**

This makes a pause while printing a job. While that job is selected on the Print Monitor click **Pause**. To resume the printing click **Pause** again.



**Abort**

This stops printing and cancel that job. While the job is selected on the Print Monitor click **Abort**.

**Information display**

Jobs to be printed are queued in the order that they are sent. On the Print Monitor, the following information is displayed for each job.

**Job Name:** The name of the file.

**Status:** The current status of the job, **Holding, RIPing, Printing**, etc.

**Copies:** The number of copies to be printed.

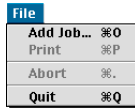
**File Type:** The file type of the selected job.

**Dimension:** Displays the print image size of a job. However, on some applications the print image has different size from the media size. In that case the monitor will show 21.54cm x 27.94cm which is not the actual output size.

## Menu

This section explains **Menu** that may appear after the RIP has started.

### File



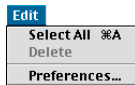
**Add job:** Works the same as the **Add job** button.

**Print:** Works the same as the **Print** button.

**Abort:** Works the same as the **Abort** button.

**Quit:** **Quit** the RIP program.

### Edit



**Select All:** **Select all** jobs added to the Print Monitor.

**Delete:** Works the same as the **Delete** button.

**Preferences:** See the section on **Preferences**.

### Setup



**Change Setup:** Changes the printer model. If you change the model, all the settings you have made in the **Setup Properties** will be cleared and reset as default.

**Setup Properties:** Please refer to the next page.

**Density Adjustment:** See the section on Density Curve Adjustment.

**Test Print:** To carry out test prints. The size of the test print data is 210x297mm.

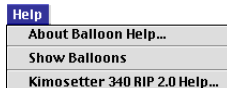
### View



**View RIP log:** Displaying the current status and error information internal to the RIP operation.

**Clear RIP log:** Clearing the RIP log.

### Help



**Kimosetter 340 RIP 2.0 Help:** Displays the User's Guide of **Kimosetter 340 RIP 2.0** as PDF format. To open the PDF files, you need Adobe Acrobat Reader. You can install Acrobat Reader from the CD of Kimosetter 340 RIP.

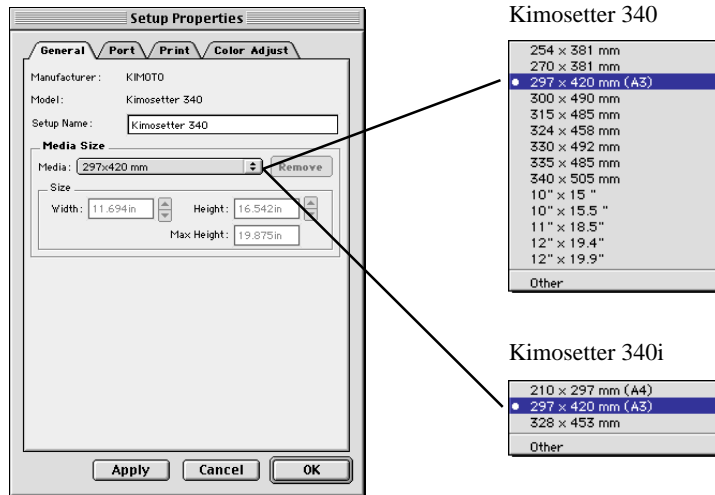
## Setup Properties

Choose **Setup Properties** from **Setup** menu to change the default preferences for the Kimosetter.



### General tab

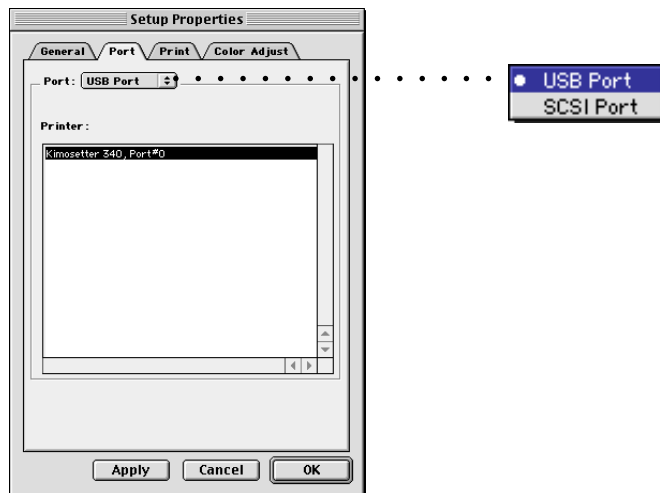
You can choose the media size. Select **Other** to specify a custom size. The minimum size is 98mm (width) x 98mm (height) and the maximum size is 330.2mm (width) x 505.0mm (height) After setting, click **Apply**.



Please make sure to use the same size for this **Setup Properties**, AdobePS Driver and the actual media.

### Port tab

Choose the port (SCSI port or USB port) to which the printer is currently connected. When a port is selected, the connected printer name will be displayed.



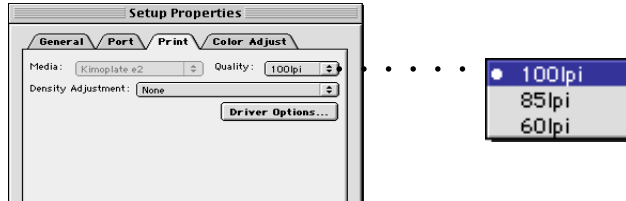
**Print tab**

The **Print tab** allows you to choose quality, adjust the density of outputs.

**Density Adjustment:** Select a profile (density curve) you have created previously.  
For details see the section on Density Curve Adjustment.

**Driver Options:** See the section on Driver Options.

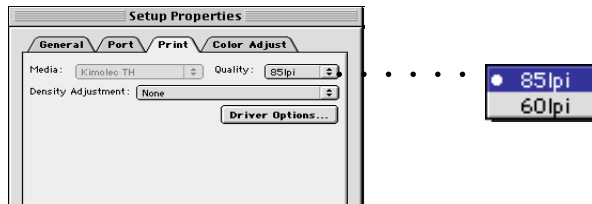
If your printer is Kimosetter 340



**Media:** Kimoplate e2

**Quality:** Choose the screen ruling from 100, 85 and 60lpi.

If your printer is Kimosetter 340i

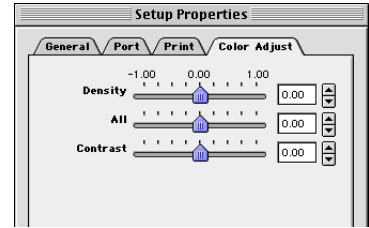


**Media:** Kimolec TH

**Quality:** Choose the screen ruling from 85 and 60lpi.

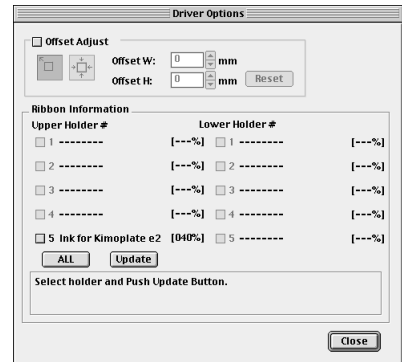
### Color Adjust tab

You can adjust **Density** and **Contrast**. The slider of **All** works the same as **Density** does. Use either of the two sliders.



### Driver Options

Clicking this button displays the **Driver Options** dialog box which gives you **Offset Adjust** option and display Ink cartridge status.



### Offset adjustment

Checking the **Offset Adjust** check box allows you to shift the image position from the default one.



#### Upper left

When this button is pressed, the home position of the print image is the upper left corner of the media.



#### Center

When this button is pressed, the home position of the print image is the center of the media.

Giving a value to Offset W and Offset H, you can shift the position of the image from the above home position.

**Offset W:** Enter the value to be shifted to right or left. The value should be within the range from -150mm to 150mm.

**Offset H:** Enter the value to be shifted up or down. The value should be within the range from -250mm to 250mm.

**Reset:** Bring back the default setting.

## Ribbon Information

**Update:** Click this button to update the status of selected (checked) ink cartridges.

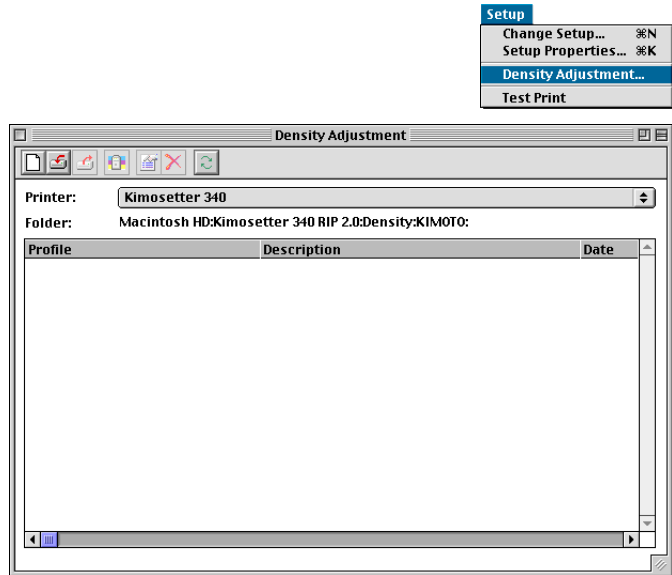
**All:** Click this button to select (check) all ink cartridges.



For more detailed explanation on how the Offset adjustment works, see the Appendix A.

## Density Curve Adjustment

The Density Curve Adjustment feature enables you to balance the print results of 2 or more Kimosetters. Choose **Density Adjustment** from **Setup** menu.



### Function of each button



#### New Profile

Use this button to create new profiles (density curves). The created profile will be added into **Density Adjustment** in the **Print** tab from the **Setup Properties**.



#### Import Profile

You can import profiles (density curves) using this button. Click the **Import Profile** button and then select the file to import it.



#### Export Profile

Use this button to export profiles (density curves). Select the profile and click the **Export Profile** button to export it.



#### Profile Properties

Use this button to edit profiles (density curves). Select the profile and click the **Profile Properties** button to display the **Density Curve Adjustment** dialog and to edit the density curve.



#### Delete Profile

Use this button to delete density files selected. Select the profile and click the **Delete Profile** button to delete.



#### Refresh List

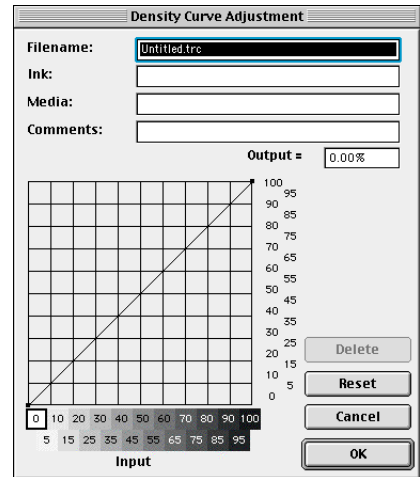
It is possible to update the list of **Density Curve Adjustment** files.



## Create and Edit Density curve

Click the **New Profile** button to create a new profile.

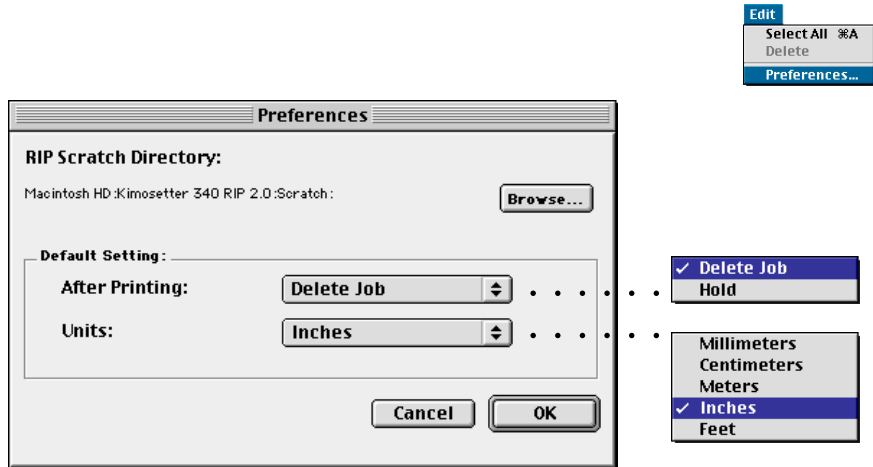
To edit the density curve, select profile in the **Density Curve Adjustment** dialog and click the **Profile Properties** button.



The vertical axis represents the output density for the input value on the horizontal axis. If you use the default setting, the density curve is a straight line and a 50% density input value read from the file will print at 50 % coverage. Drag the curve line to the new location by using the mouse to edit. After editing, input the file name and click **OK**.

## Preferences

To change the following default setting, choose **Preferences** from **Edit** menu.



**Browse:** Locate the RIP scratch folder for temporary files created during RIPing. If you are using multiple hard disks, choose the one that has larger free disk space. Lack of free disk space may cause errors while RIPing a very large file.

**After Printing:** Specify whether you **Delete** or **Hold** jobs after printing.

**Units:** You can select a measurement unit which will be applied to the media size you select on 'Setup > Setup Properties > General > Media: Other' and to the **Dimension** in the Print Monitor. Available units are; millimeters, centimeters, meters, inches and feet.

## Chapter 3. Printing

There are two ways to print. One is to print without opening the application on which the file was created. The other is to send the print command from the application.

In this chapter the description is about Kimosetter 340. For Kimosetter 340i, just read 340 as 340i and AmKMT340A.PPD as AmKMT340Ai.PPD.

**CAUTION**

While the RIP program is open, never use (select in the Chooser) the Kimosetter Printer Driver (driver software that comes with Kimosetter); it may cause a malfunction.

### Printing files without opening the application on which they were created

The following file formats can be printed without opening the applications on which each file was created; JPEG, TIFF, PDF, PostScript and EPS.

**CAUTION**

- The supported format of PDF and TIFF is up to Ver 1.2 and Ver 5.0 respectively. If you cannot print properly, open the file on its application and send print command from that application.
- A JPEG saved as CMYK Color Mode can be printed larger than a JPEG file saved in the application. The print sizes are as follows:  
Horizontal: Horizontal pixels / 72 [inches]  
Vertical: Vertical pixels / 72 [inches]
- Since page information is not included as data in JPEG, TIFF and EPS formats, images are printed justified to the left top corner.
- When printing JPEG, TIFF and EPS files, load the media that is larger than the Size shown on the Print Monitor.

#### 1. Start up RIP.

Double-click the **Kimosetter 340 RIP 2.0** icon.

#### 2. Verify the Setup Preferences of RIP.

Open the Setup Properties dialog box from Setup menu and verify the following.

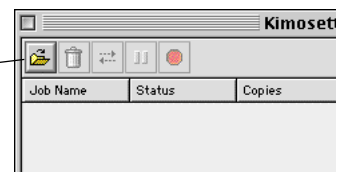
**Media size** in General tab

**Printer name** in Port tab

**Quality** (Screen ruling) in Print tab

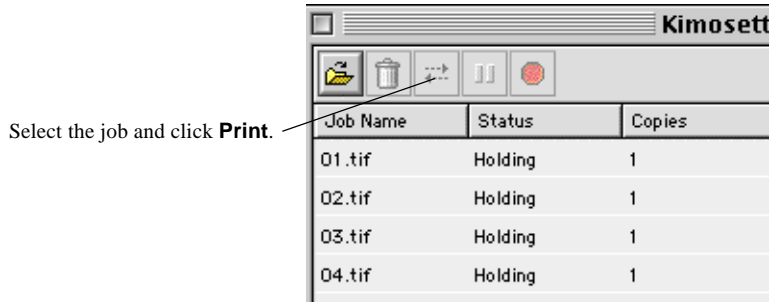
#### 3. Click **Add job**.

Click **Add job** from the Print Monitor.



#### 4. Select the file to be printed.

Select file to be printed and click **Open**.

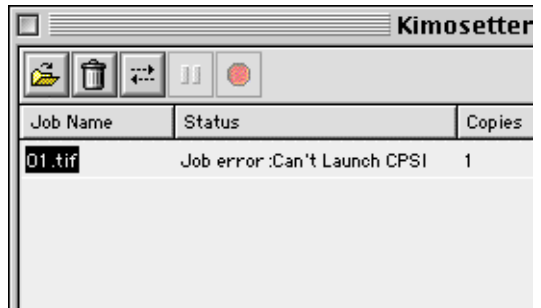
5. Click **Print**.

The newly added job will be listed on the Print Monitor with the status as Queue. If it is a PostScript file, the printing procedure is up to which option you have selected, **Print** or **Hold**, as **After spooling** on AdobePS Driver. (**File > Print > Printer specific options > After spooling**)

To print jobs of Queue status, select the files and click **Print**.

**MEMO** You can drag and drop the jobs to be added to the Print Monitor window directly.

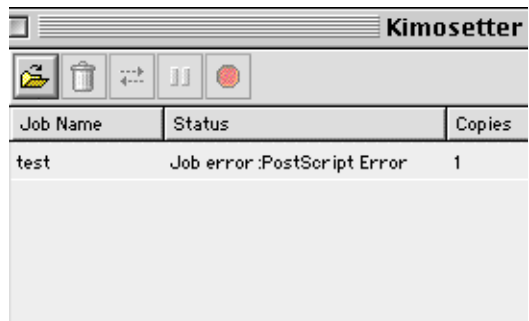
**CAUTION** • If the **Status** of the Print Monitor shows the following messages when adding jobs, please terminate RIP. Next, select About This Computer from the **Apple Menu** to confirm the current status of the memory. Please secure memory by closing any applications you are not using.



• If the following message appears when processing RIP after adding jobs, check whether View RIP log is being displayed from the View menu.

```
%%[ Error: VMerror; xxxx ]%%
```

If this message appears in the log file, perform RIP processing again after allocating more memory to the **'RIP Engine'** in the **'Program'** folder.



**Printing from the application on which the file was created.**

1. Create a file on your application program.

2. Start up RIP and setup properties.

Open the **Setup Properties** dialog box from **Setup** menu to check the following settings.

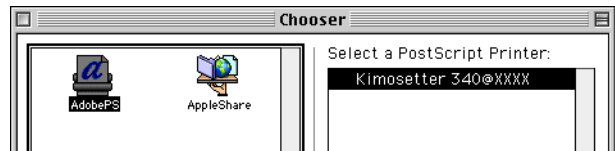
**Media size** in General tab

**Printer name** in Port tab

**Quality** (Screen ruling) in Print tab

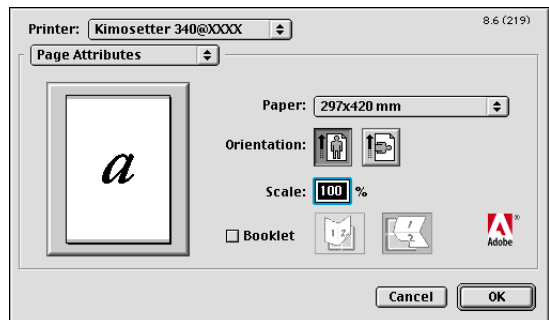
3. Confirm **Kimosetter 340@xxxx** in Chooser.

Open **Chooser** from the **Apple Menu** to select **AdobePS**. Select **Kimosetter 340@xxxx** (your computer name will be displayed on xxxx.) from **Select a PostScript Printer**.



4. Select **Page Setup** from the **File** menu.

Choose an appropriate media size and orientation, then click **OK**.



**CAUTION** The **Invert image** feature from the pop-up menu **PostScript Options** is not valid. If you want to invert the image (to negative), go to Print dialog box. 'File > Print > Printer Specific Options' choose **True** from **Negative print** pop-up menu.

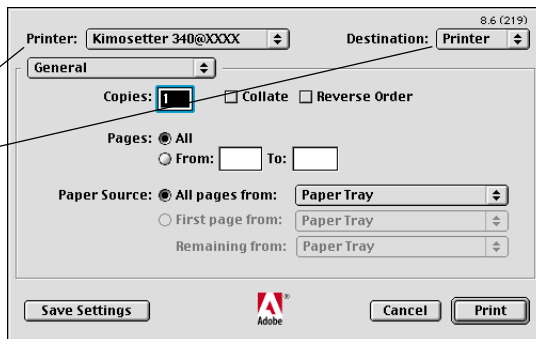
**5. Go to File > Print**

Go to **File > Print** in the application to display the Print dialog box.

Confirm the following item

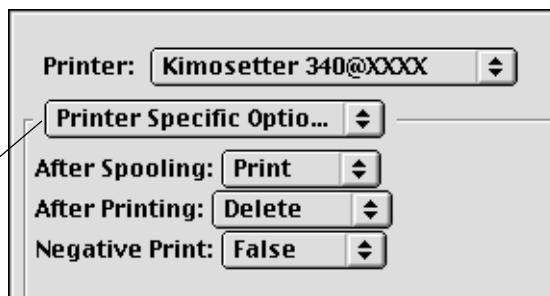
Printer: Kimosetter 340@xxxx,

Destination: Printer



**MEMO** It is possible to edit the settings by selecting **Printer Specific Options** from the pop-up menu.

Select **Printer Specific Options** from the pop-up menu.



**After Spooling:** Set what to do with the job after adding it into the Print Monitor.

When the job is set to **Hold**, RIP processing will not commence.

When the job is set to **Print**, printing will be carried out after RIP processing.

**After printing :** Specify what to do with the job after printing.

**Hold** and **Delete** can be selected.

**Negative Print:** Option is either **True** or **False**. If you choose True, the print image will be inverted to negative output.

**6. Click Print.**

Click **Print** in the Print dialog box to start printing.

## To print from PageMaker6.5

1. Create data with the PageMaker6.5.

2. Set Kimosetter 340 RIP 2.0.

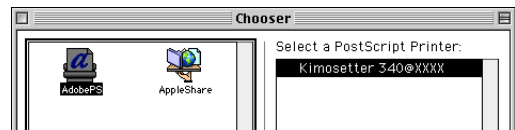
Check the settings for each tab.

**General : Media Size**

**Port** : confirm that the printer name is displayed in the **Printer** list.

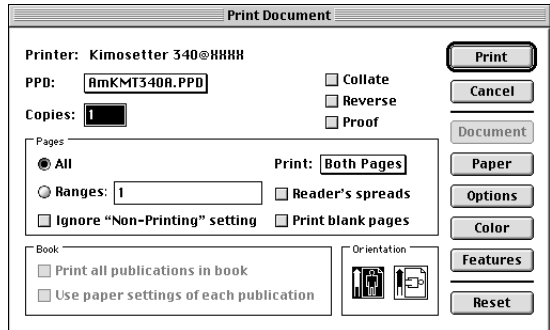
**Print : Quality**

After confirming the information for each tab, click **OK**. Open **Chooser** from the **Apple Menu** to select **AdobePS**. Select **Kimosetter 340@xxxx** (your computer name will be displayed on xxxx.) from **Select a PostScript Printer**.



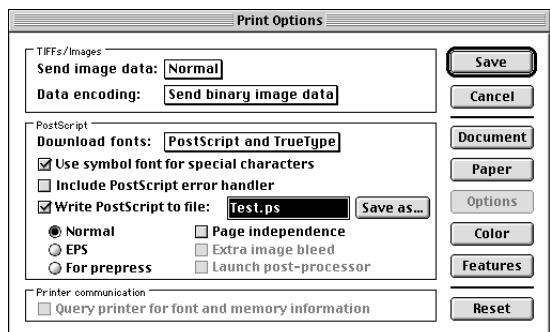
3. Select **Print** from the **File** menu.

Confirm that the format is 'AmKMT340A.PPD'.



4. Select **Options**.

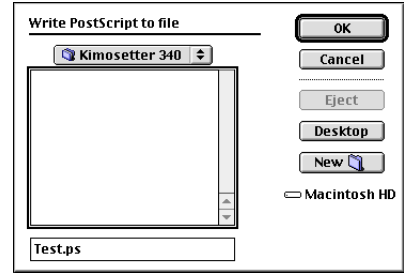
Check the box for **Write PostScript to file**.



5. Select **Save as**.

5-1 Printing from the computer in which RIP is installed.

Click **Save as** to set '**Kimosetter 340 RIP 2.0 > Jobs > Kimosetter 340**'. Click **OK**.



5-2 Printing from a Client Computer.

Click the **Save as** button and select the desired folder or the desktop as location, then click **OK**.

6. Execute settings.

Execute settings such as paper setting.



In **Print Color** dialog, designating the **Negative** function is invalid. Please select **Negative** in the **Features** to print in reverse printed.

7. Start printing.

7-1 Printing from the computer in which RIP is installed.

Click **Save** after the settings have been completed.

7-2 Printing from a Client Computer.

Drag and drop the PostScript file to the desktop icon **Kimosetter 340@xxxx** (your computer name will be displayed on xxxx.)



## Appendix A About Offset Adjustment

This version 2.0 enables you to shift the position of the image on the media using the Offset Adjustment feature.

The "Print Image" here refers to the size of image that you specify as "media size" on the application (or AdobePS Driver), or such graphic image files as TIFF, JPEG etc.

The "output media" here refers to the physical size of the media you set to the Kimosetter.

Please make sure that the media size you select from RIP menu (General > Media size) is the same as the output media.

The default setting will put the image on the media in the following way.

### 1. Print image = Output media

If the print image is the same as the output media, the upper left corner of the print image will come to the upper left corner of the media. However, the actual print size is within the printable area of the media. (Non printable margin of the media is 3.4mm x at the left and right, 12mm at the top and 15mm at the bottom for the media size 330.2mm (W) x 505.0mm (H) or smaller. For the width larger than this, the non printable margin at the right side will be extended. For example, the right margin will be 13.2mm for the media width of 340mm. For details see the section on 'Printable Area' on the page 73 of the User's Manual of Kimosetter 340/340i.)

### 2. Width of print image < Width of printable area

If the width of the print image is smaller than the width of the printable area, the left edge of the print image comes to the left edge of the printable area (3.4mm from the edge of the media).

### 3. Height of print image < Height of printable area

If the height of print image is smaller than the height of the printable area, the upper edge of the print image will come to the upper edge of the printable area (12mm from the top of the media).

### 4. Width and Height of print image < Width and Height of printable area

If the width and height of the print image is smaller than the width and height of the printable area, the upper left corner of the print image will come to the upper left corner of the printable area (3.4mm from the left, 12mm from the top).

### 5. Width of print image > Width of printable area

If the width of the print image is wider than the width of the printable area, it is printed so that the center line of the print image width may cross the center point of the media.

### 6. Height of print image > Height of printable area

If the height of the print image is longer than the height of the printable area, it is printed so that the center line of the print image height may cross the center point of the media.

### 7. Width and Height of print image > Width and Height of printable area

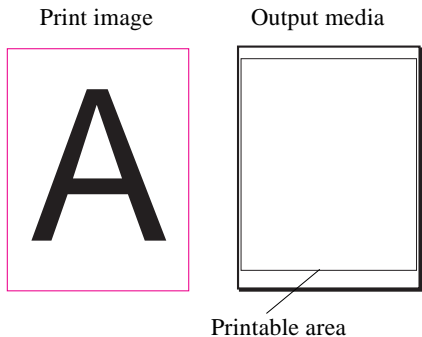
If the width and height of the print image is bigger than the width and height of the printable area, it is printed so that the center of the print image may come to the center of the media.

In the above cases of 5, 6 and 7, however, the actual print size is within the printable area of the media.

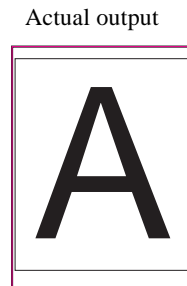
With the offset adjustment feature on, you can adjust the position of image on the media. Here are some examples with illustrations.

Please note that the actual print size is within the printable area of the media. (Non printable margin of the media is 3.4mm at the left and right, 12mm at the top and 15mm at the bottom.)

(1) Print image = Output media



Offset Adjust: OFF  
or  
Offset Adjust: ON  
Offset W: 0mm  
Offset H: 0mm



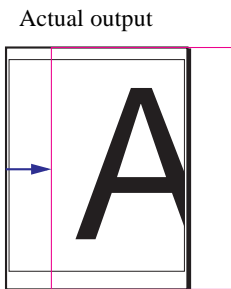
Offset Adjust: ON

button: ON

Offset W: 30mm

Offset H: 0mm

The left side of the print image is shifted to the right by 30mm.



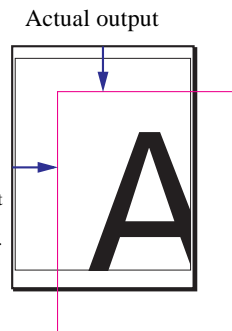
Offset Adjust: ON

button: ON

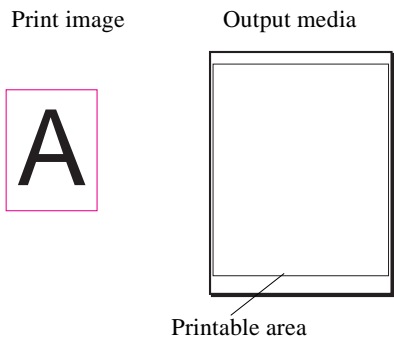
Offset W: 30mm

Offset H: 30mm

The print image is shifted to the right by 30mm and downward by 30mm.

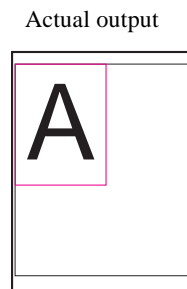


(2) Print image < Output media



Offset Adjust: OFF  
or  
Offset Adjust: ON  
 button: ON  
Offset W: 0mm  
Offset H: 0mm

The upper left corner of the print image will come to the upper left corner of the printable area (3.4mm from the left, 12mm from the top).



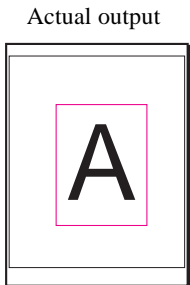
Offset Adjust: ON

button: ON

Offset W: 0mm

Offset H: 0mm

The print image will be centered in the media.



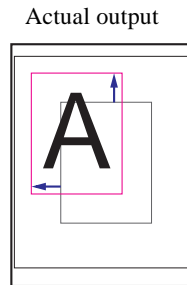
Offset Adjust: ON

button: ON

Offset W: -30mm

Offset H: -30mm

The position of the print image will be shifted from the center by 30mm upward and 30mm to the left.



**CAUTION** The maximum shift value of offset W is 150 (from -150mm to 150mm).  
The maximum shift value of offset H is 250 (from -250mm to 250mm).

## Appendix B List of Fonts

This is a list of fonts that come with Kimosetter 340 RIP 2.0 in their output style.

Albertus MT Light	Eurostile Medium
Albertus MT	<b>Eurostile Bold</b>
<i>Albertus MT Italic</i>	Eurostile Extended Two
Antique Olive	<b>Eurostile Bold Ext Two</b>
<i>Antique Olive Italic</i>	Geneva
<b>Antique Olive Bold</b>	Gill Sans Light
<b>Antique Olive Compact</b>	<i>Gill Sans Light Italic</i>
<i>Apple Chancery</i>	Gill Sans
Arial	<i>Gill Sans Italic</i>
<i>Arial Italic</i>	<b>Gill Sans Bold</b>
<b>Arial Bold</b>	<i>Gill Sans Bold Italic</i>
<i>Arial Bold Italic</i>	<b>Gill Sans Extra Bold</b>
Bodoni	Gill Sans Condensed
<i>Bodoni Italic</i>	<b>Gill Sans Bold Condensed</b>
<b>Bodoni Bold</b>	Goudy
<i>Bodoni Bold Italic</i>	<i>Goudy Italic</i>
<b>Bodoni Poster</b>	Goudy Bold
Bodoni Poster Compressed	<i>Goudy Bold Italic</i>
Carta 	Goudy Extra Bold
<b>Chicago</b>	Helvetica
Clarendon Light	<i>Helvetica Oblique</i>
Clarendon Roman	<b>Helvetica Bold</b>
<b>Clarendon Bold</b>	<i>Helvetica Bold Oblique</i>
<b>Cooper Black</b>	Helvetica Condensed
<b>Cooper Black Italic</b>	<i>Helvetica Condensed Oblique</i>
COPPERPLATE GOTHIC	<b>Helvetica Condensed Bold</b>
THIRTY TWO BC	<i>Helvetica Condensed Bold Oblique</i>
<b>COPPERPLATE GOTHIC</b>	Helvetica Narrow
THIRTY THREE BC	<i>Helvetica Narrow Oblique</i>
<i>Coronet</i>	Helvetica Narrow Bold
Courier	<i>Helvetica Narrow Bold Oblique</i>
<i>Courier Oblique</i>	Hoefler Text
<b>Courier Bold</b>	<i>Hoefler Text Italic</i>
<i>Courier Bold Oblique</i>	<b>Hoefler Text Black</b>
	<b>Hoefler Text Black Italic</b>
	Hoefler Text Ornaments 

Joanna MT  
 Joanna MT Italic  
**Joanna MT Bold**  
**Joanna MT Bold Italic**  
 Letter Gothic  
*Letter Gothic Slanted*  
 Letter Gothic Bold  
*Letter Gothic Bold Slanted*  
 ITC Avant Garde Gothic Book  
*ITC Avant Garde Gothic Book Oblique*  
**ITC Avant Garde Gothic Demi**  
***ITC Avant Garde Gothic Demi Oblique***  
 ITC Bookman Light  
*ITC Bookman Light Italic*  
**ITC Bookman Demi**  
***ITC Bookman Demi Italic***  
 ITC Lubalin Graph Book  
*ITC Lubalin Graph Book Oblique*  
**ITC Lubalin Graph Demi**  
***ITC Lubalin Graph Demi Oblique***  
*ITC Zapf Chancery Medium Italic*  
 ITC Zapf Dingbats ①②  
 ITC Mona Lisa Recut  
*Marigold*  
 Monaco  
 New Century Schoolbook  
*New Century Schlbk Italic*  
**New Century Schlbk Bold**  
***New Century Schlbk Bold Italic***  
 New York  
 Optima  
*Optima Italic*  
**Optima Bold**  
***Optima Bold Italic***  
 Oxford

Palatino  
*Palatino Italic*  
**Palatino Bold**  
***Palatino Bold Italic***  
 Stempel Garamond  
*Stempel Garamond Italic*  
**Stempel Garamond Bold**  
***Stempel Garamond Bold Italic***  
 Symbol αβχδΑΒΧΔ♥♦♣♠↑⇒∞  
 Tekton  
 Times  
*Times Italic*  
**Times Bold**  
***Times Bold Italic***  
 Times New Roman  
*Times New Roman Italic*  
**Times New Roman Bold**  
***Times New Roman Bold Italic***  
 Univers 45 Light  
*Univers 45 Light Oblique*  
 Univers 55  
*Univers 55 Oblique*  
**Univers 65 Bold**  
***Univers 65 Bold Oblique***  
 Univers 57 Condensed  
*Univers 57 Condensed Oblique*  
**Univers 67 Condensed Bold**  
***Univers 67 Condensed Bold Oblique***  
 Univers 53 Extended  
*Univers 53 Extended Oblique*  
**Univers 63 Extended Bold**  
***Univers 63 Ext Bold Oblique***  
 Wingdings