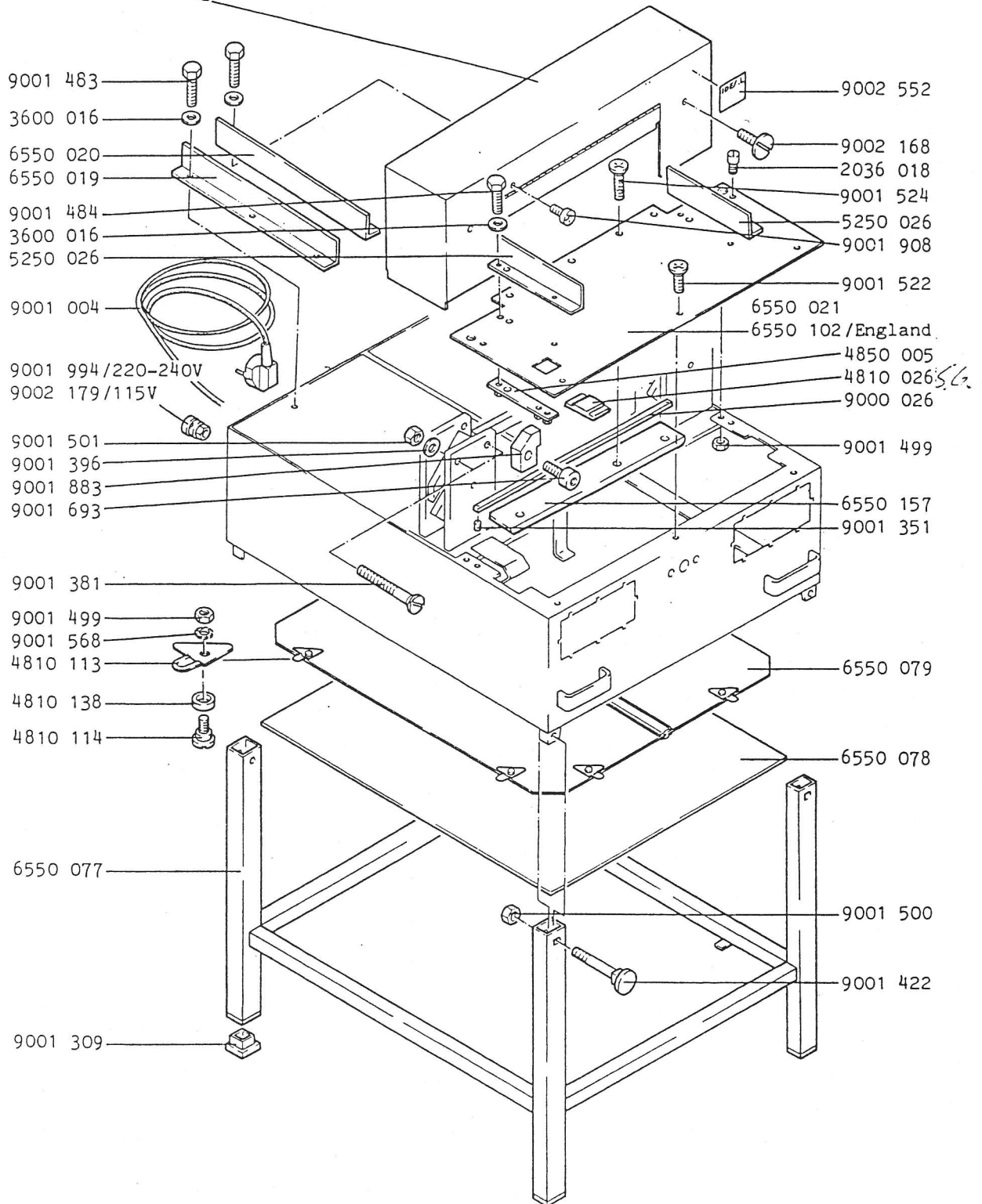
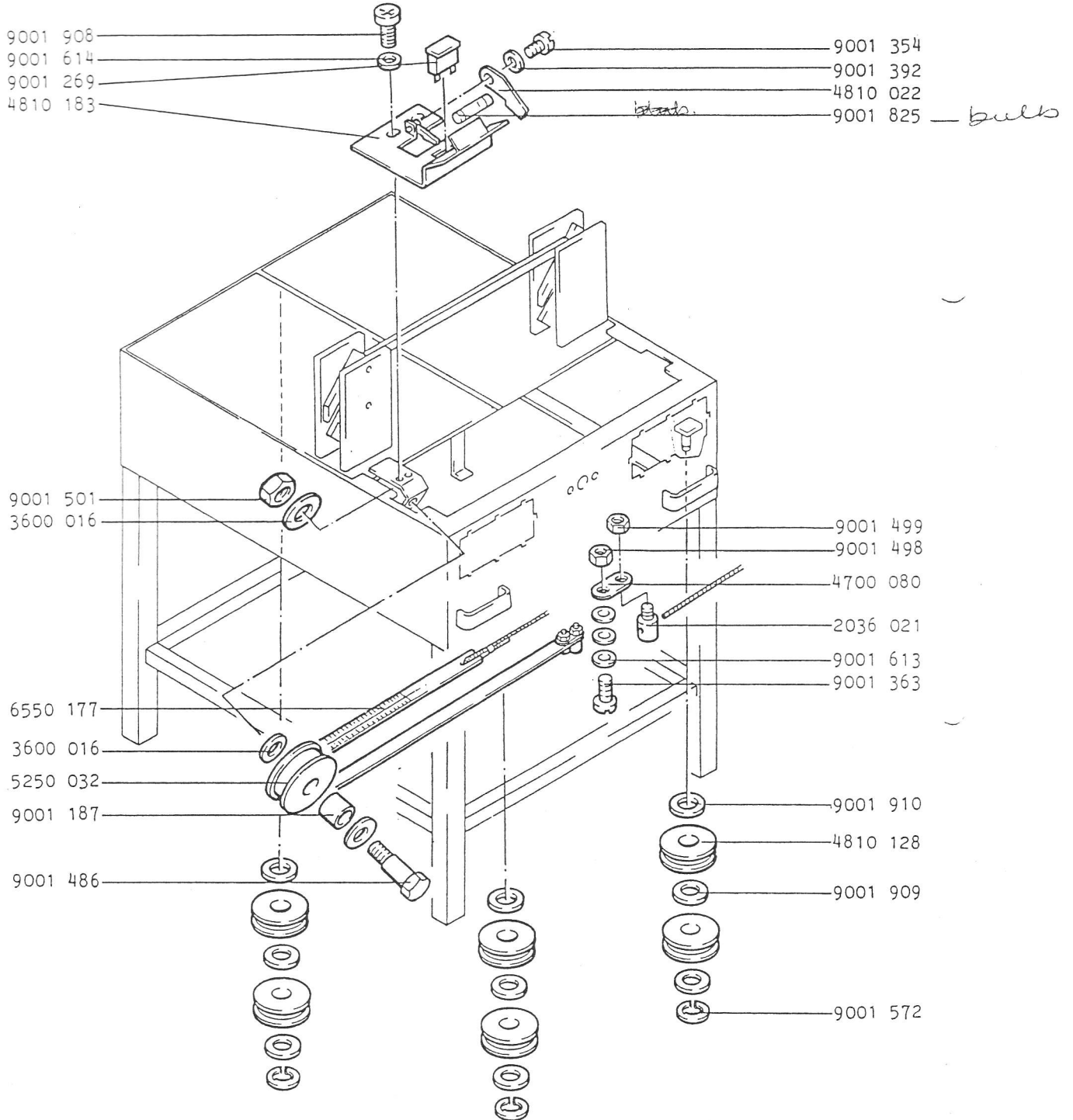


# Mod. 6550 A

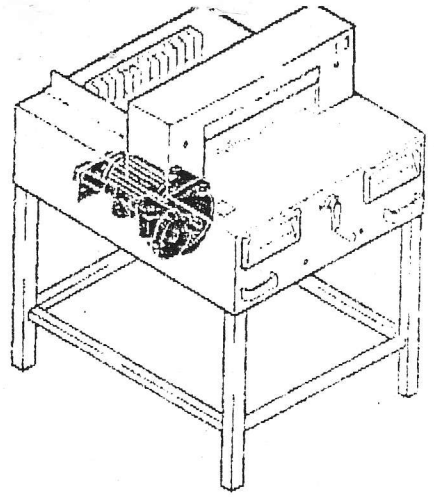
6550 189  
6550 092/England



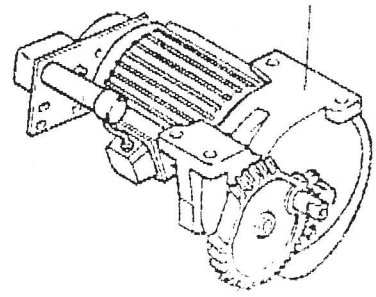
# Mod. 6550 A



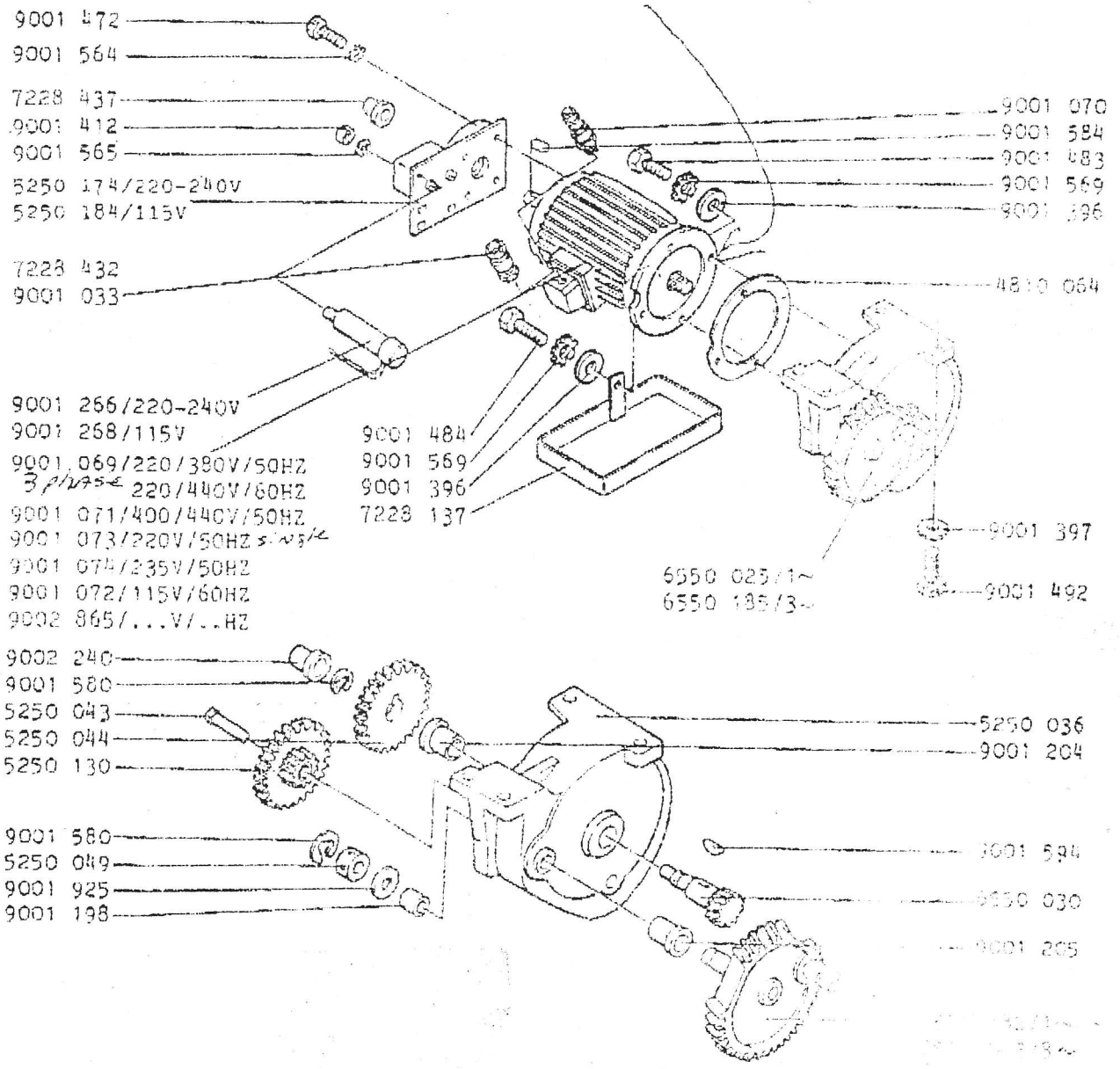
# Mod. 6550 A



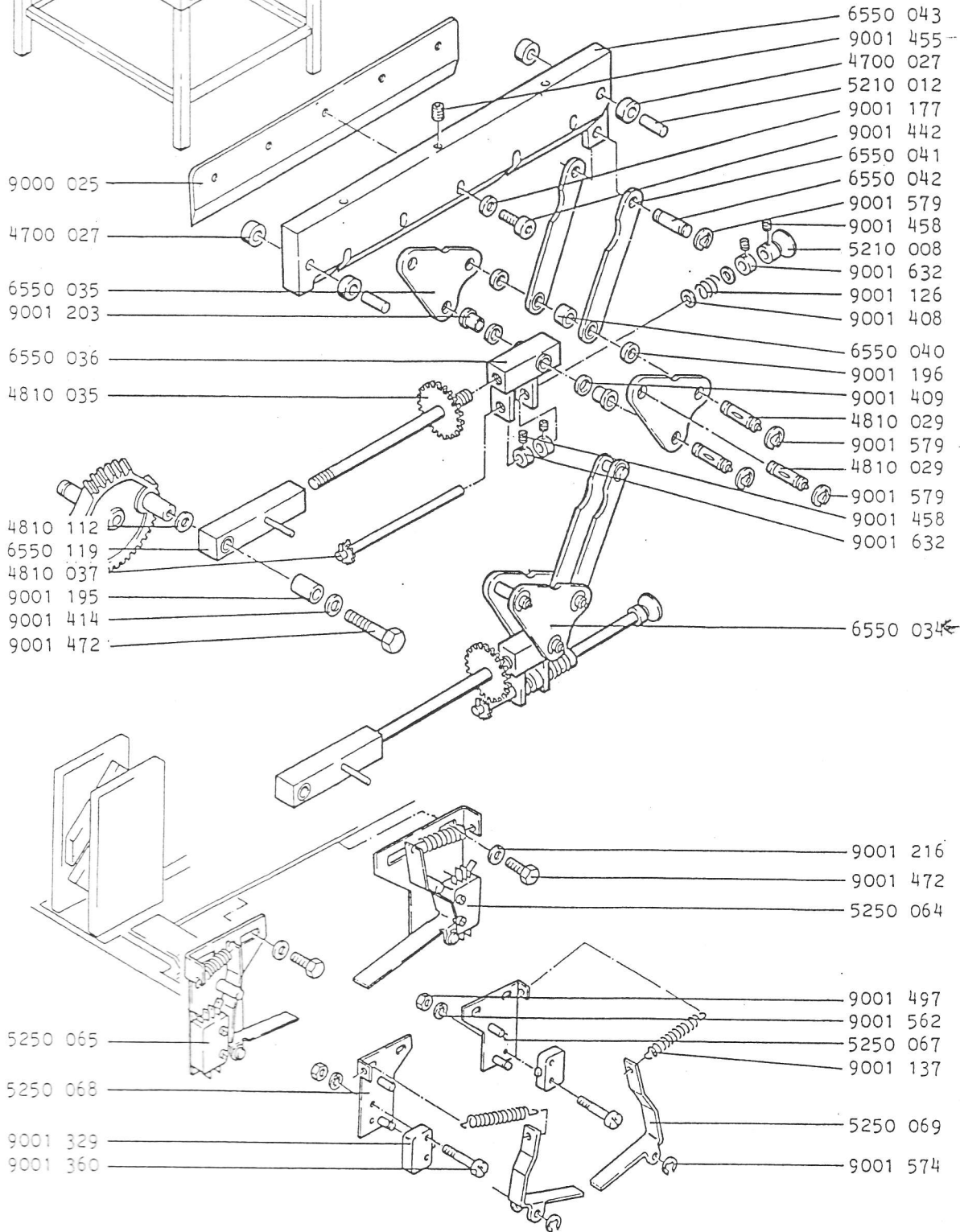
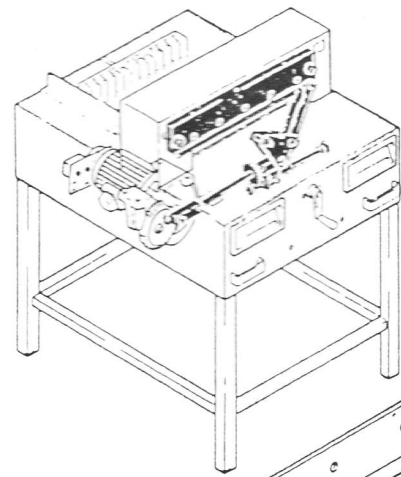
- 6550 180/220/380V/50HZ  
220/440V/60HZ
- 6550 181/400/440V/50HZ
- 6550 170/220V/50HZ
- 6550 171/235V/50HZ
- 6550 172/115V/60HZ
- 6550 190/.../...HZ



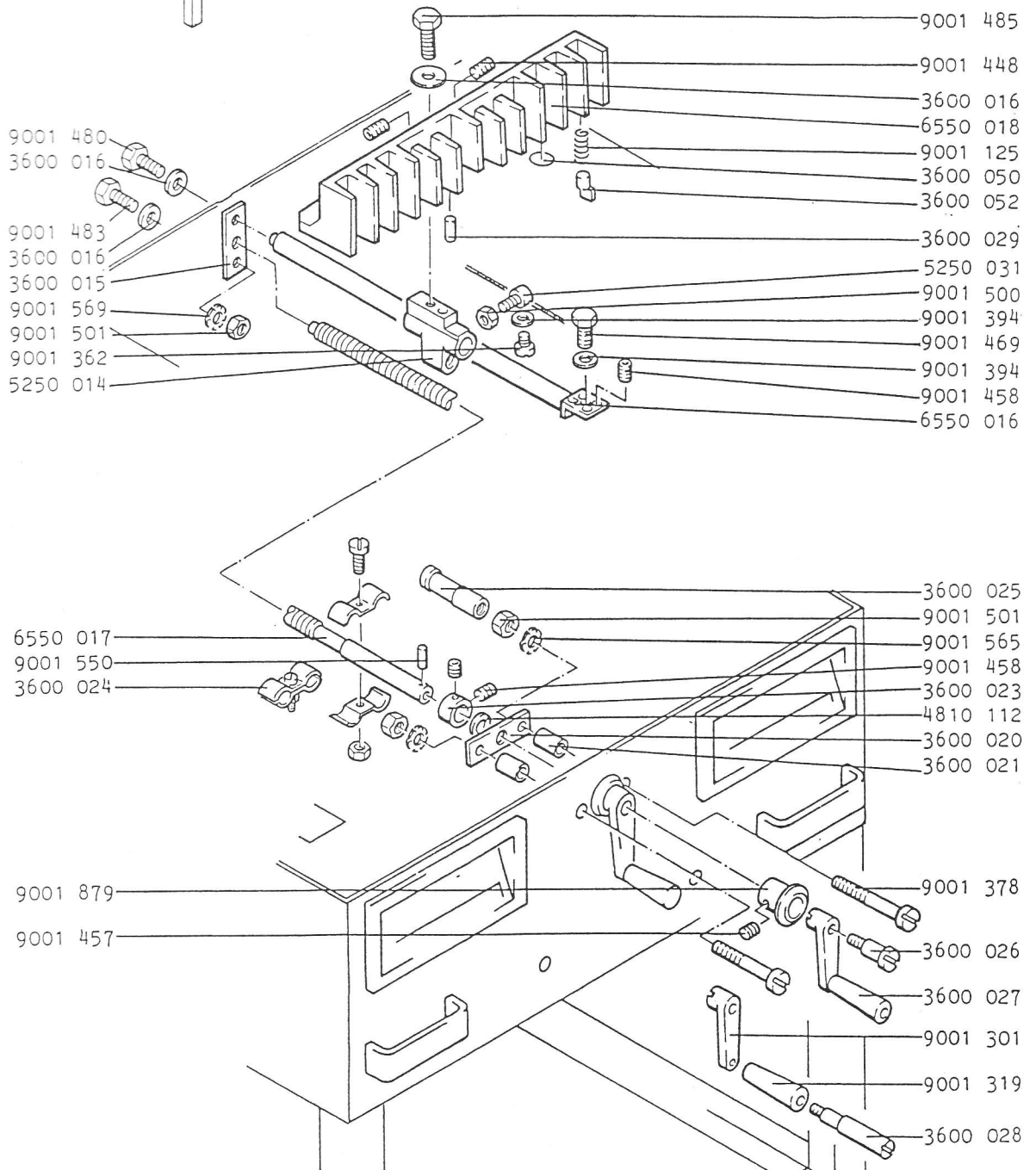
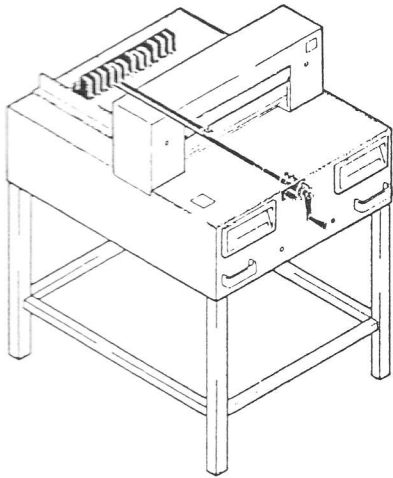
*4 notes - 220V single phase -  
8 notes - 3 phase - 4 leg  
control table*



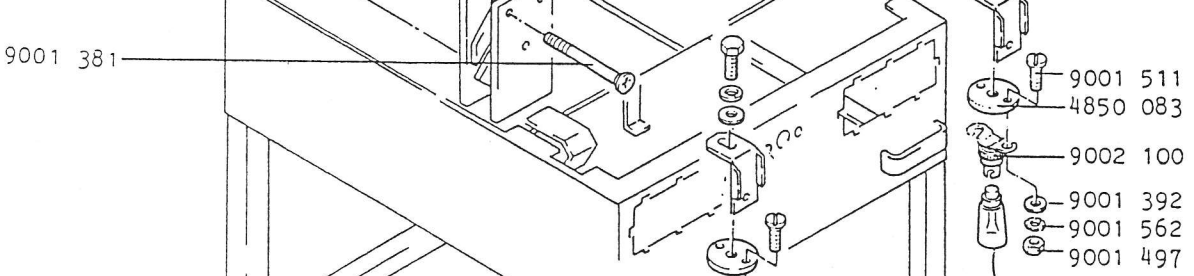
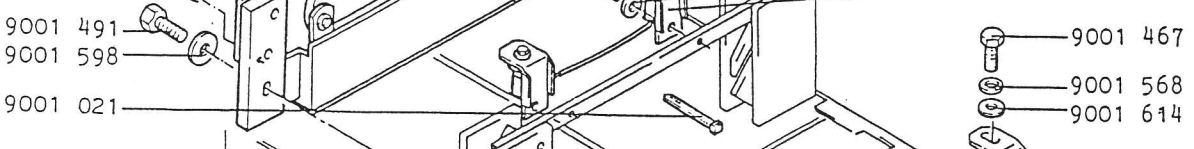
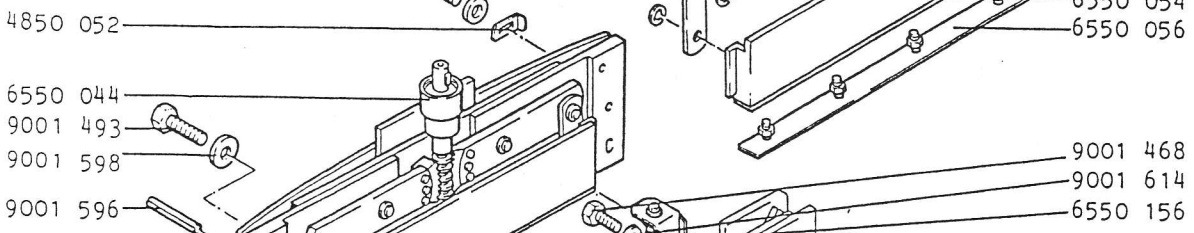
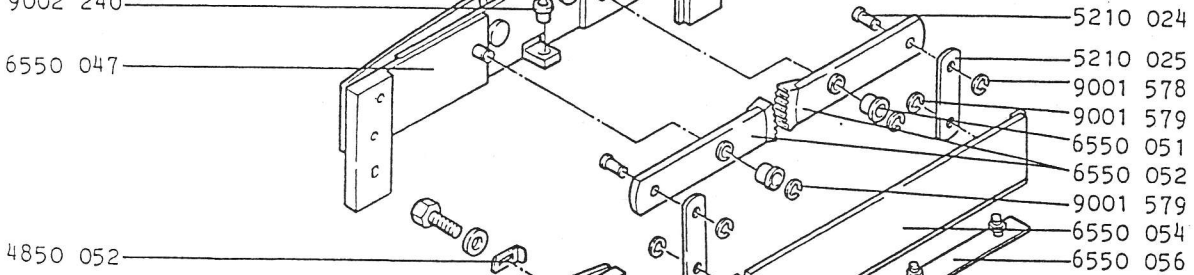
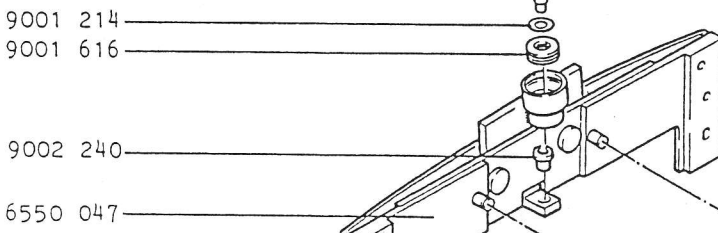
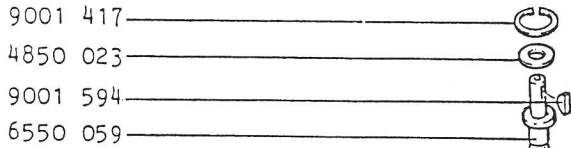
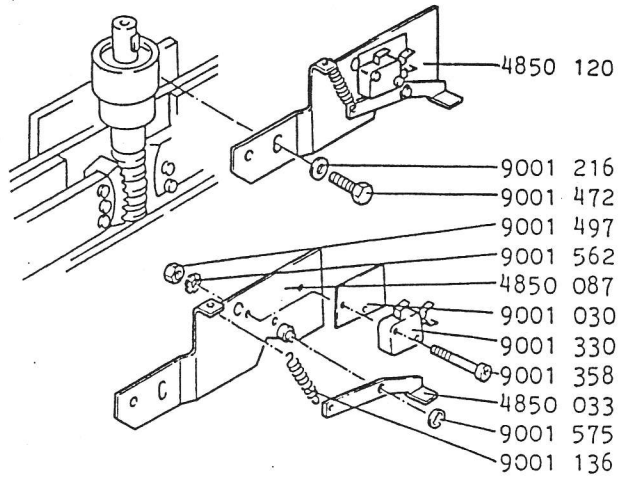
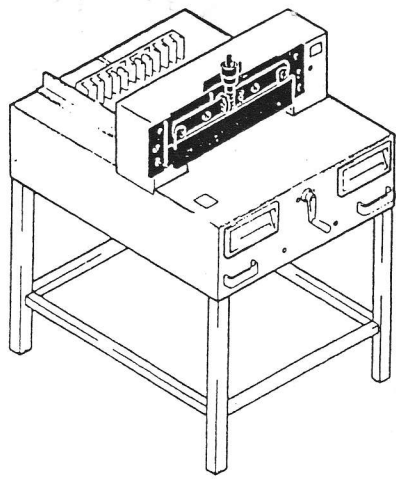
# Mod. 6550 A



# Mod. 6550 A

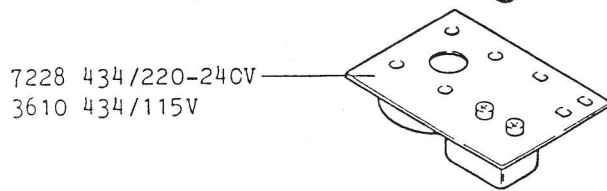
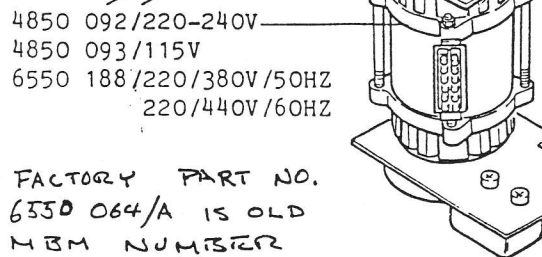
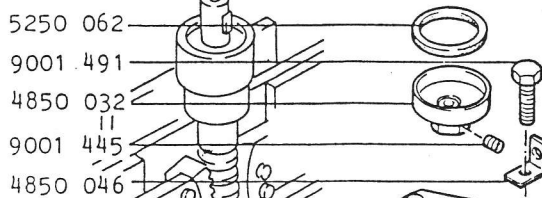
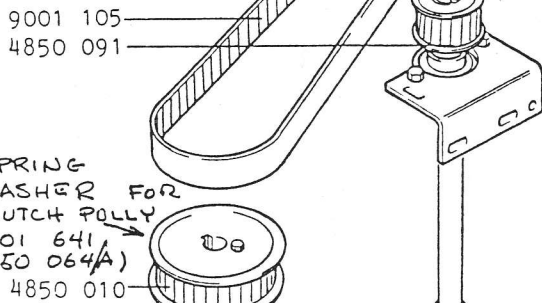
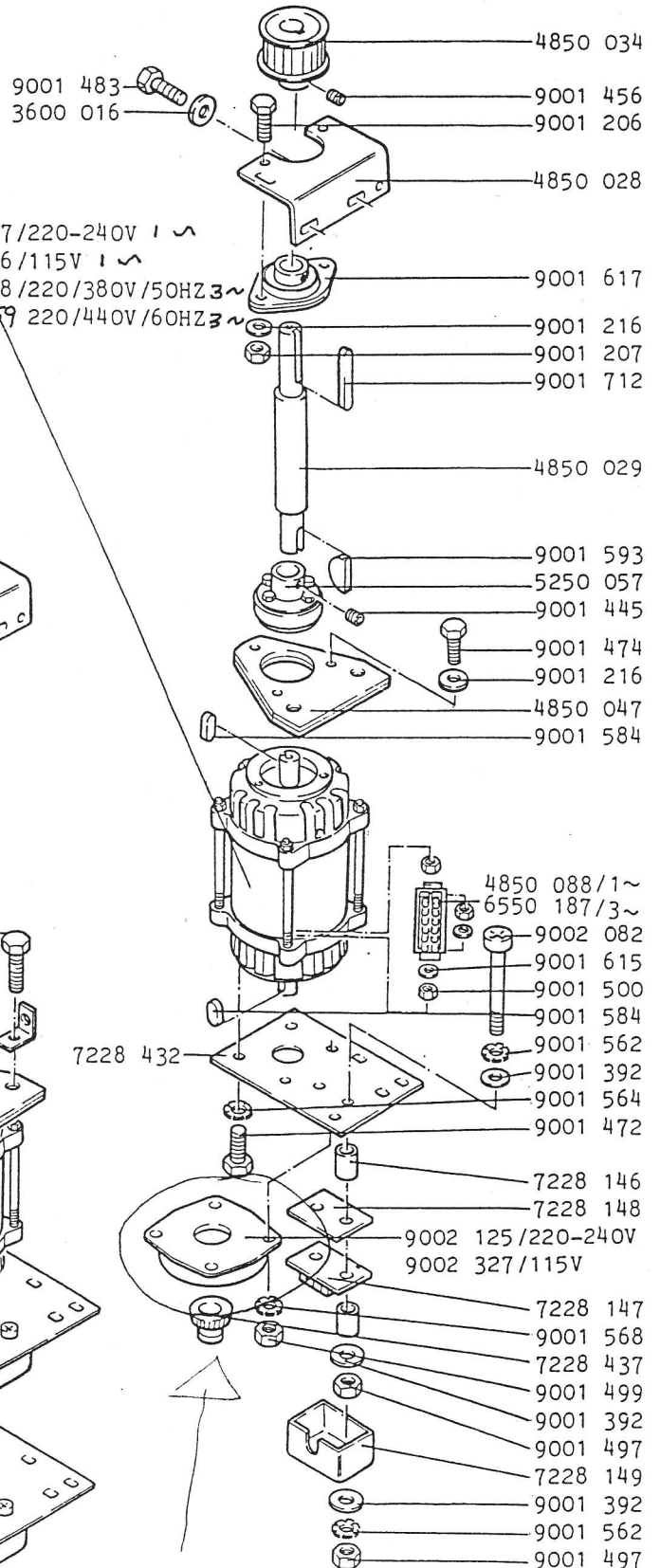
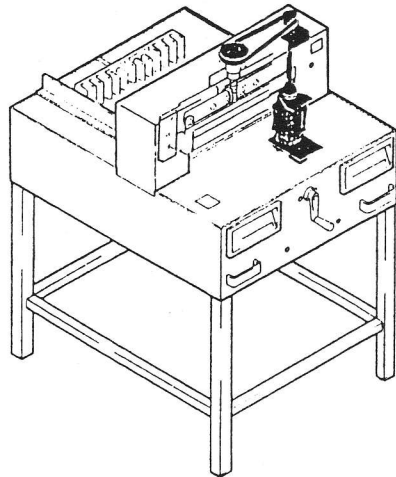


# Mod. 6550 A

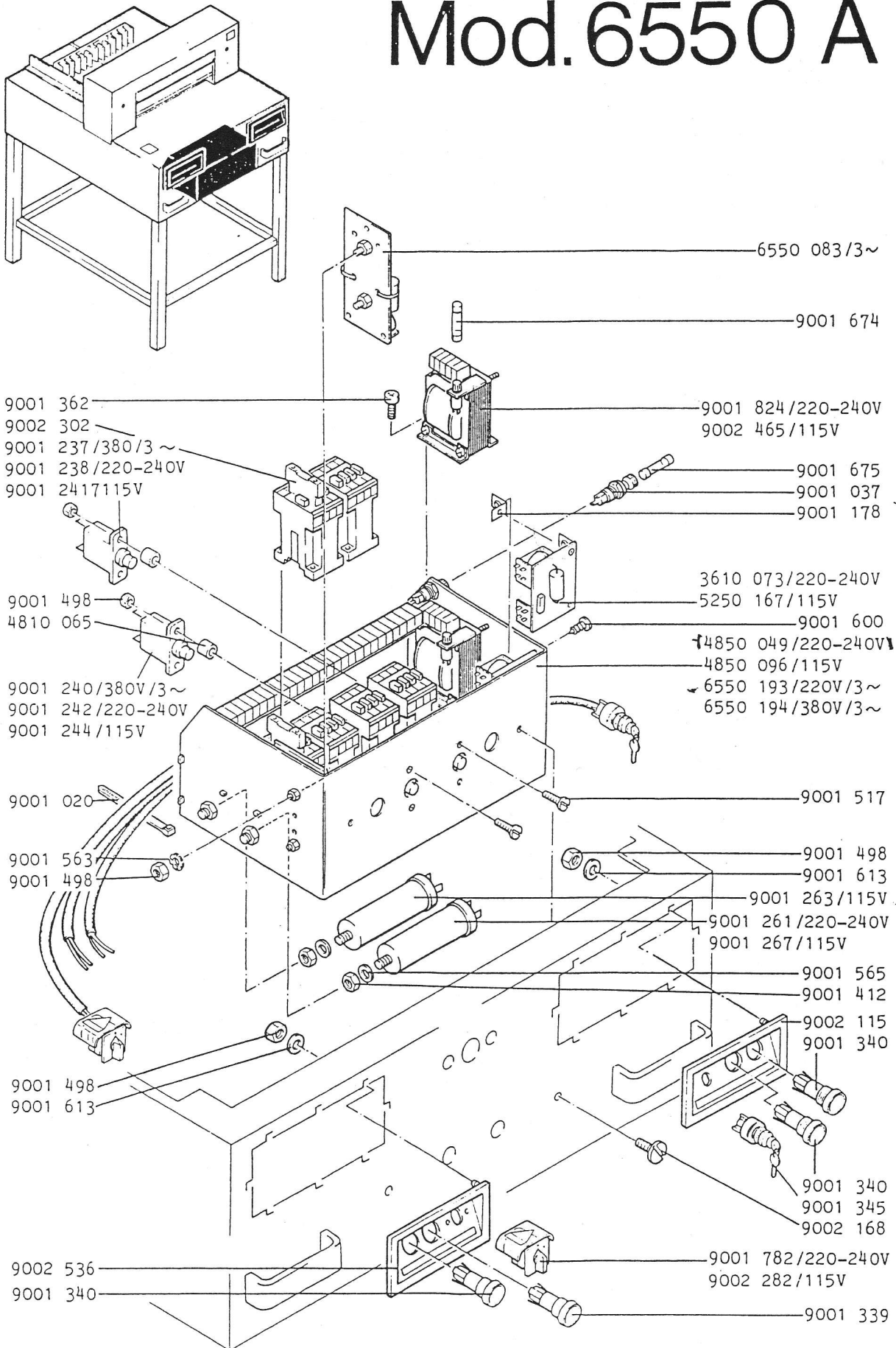


bulb  
9002 077 - bulb

# Mod. 6550 A

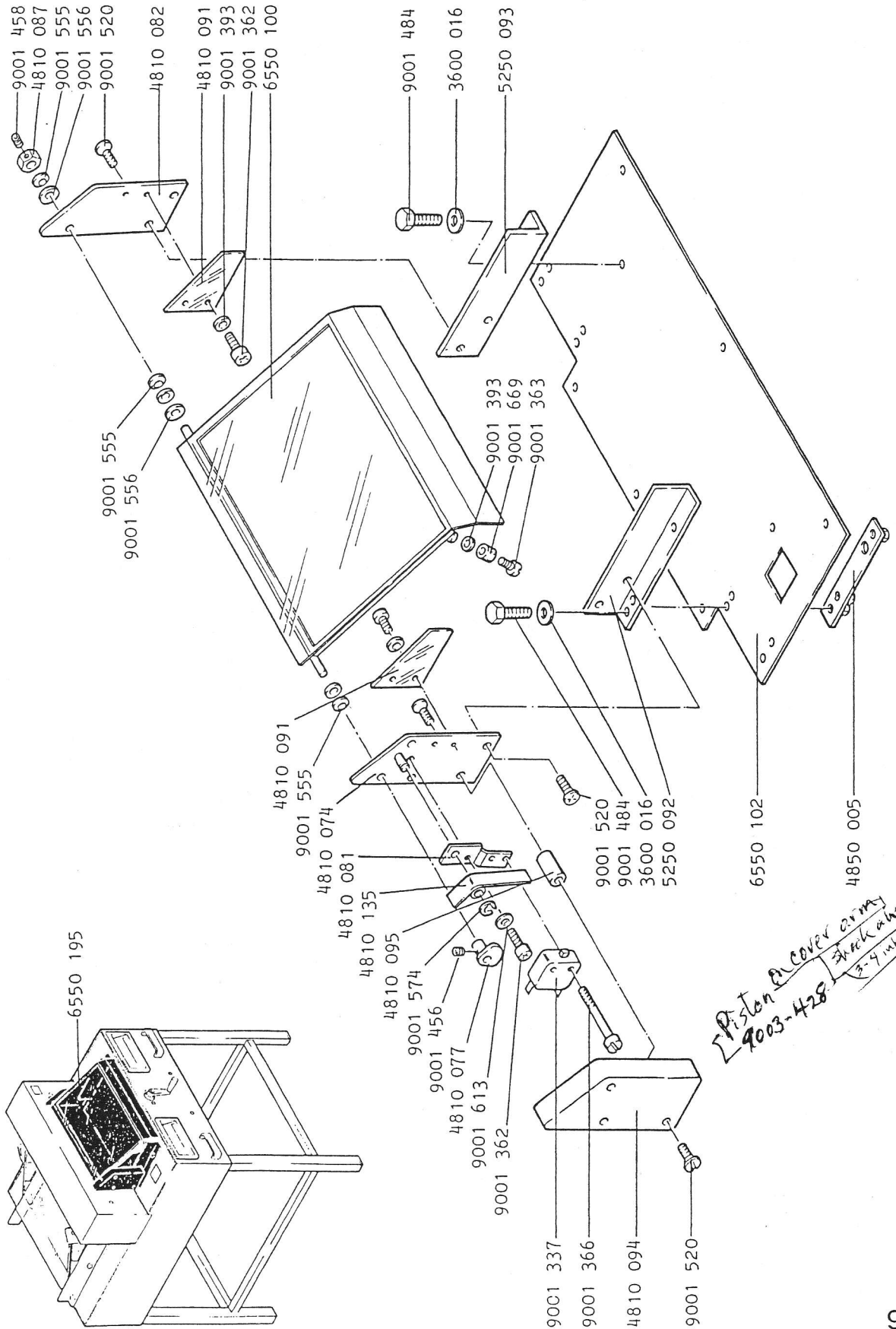


# Mod. 6550 A



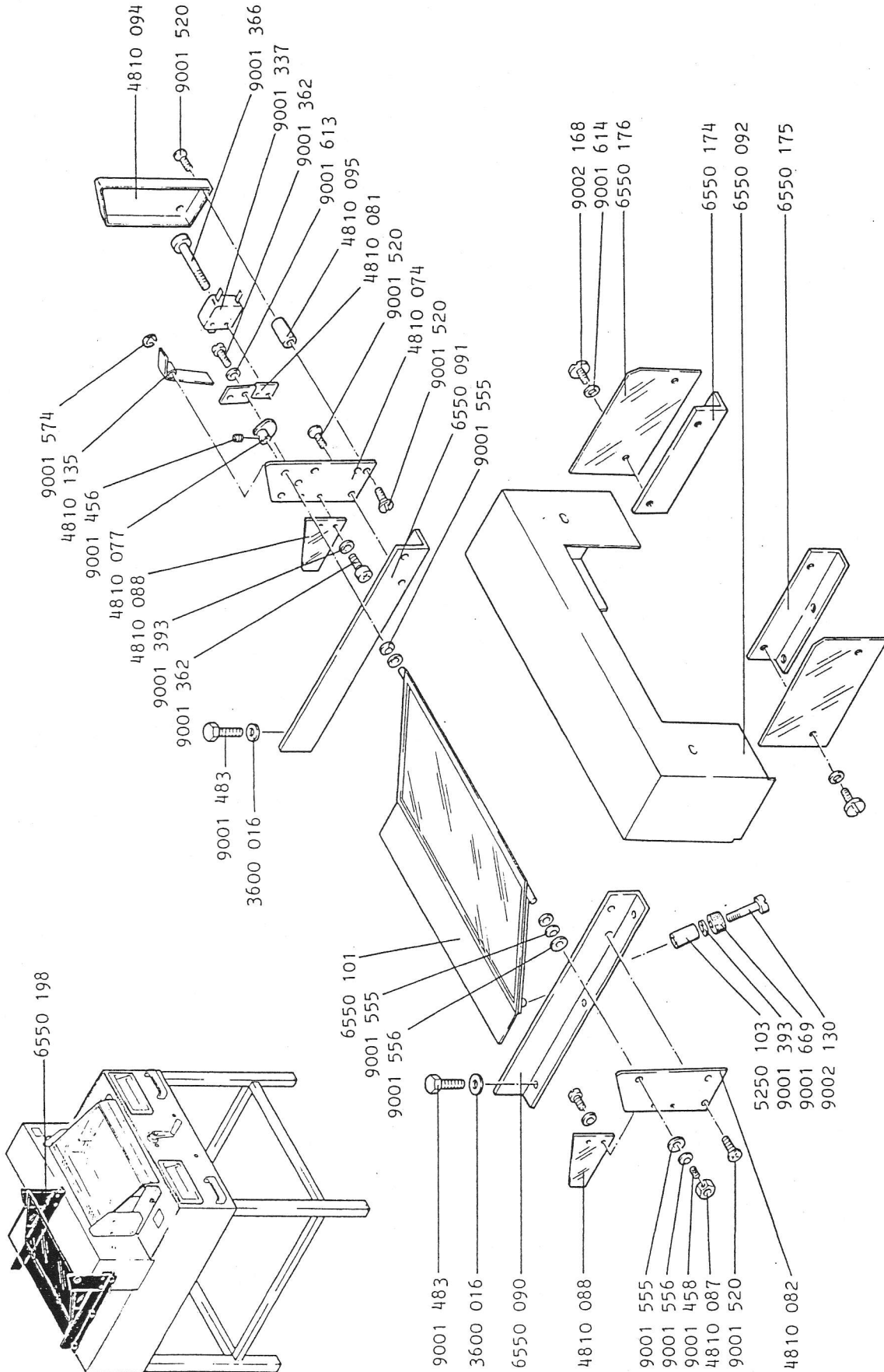


# Mod. 6550 A



*Piston on cover arm  
9003-428. Check a washer  
3-7 mks. 8/50*

# Mod. 6550 A







Kurzzeichen	deutsch	english	français
C 1	Kondensator Antriebmotor	condensator cutting motor	condensateur de ml
C 2	Kondens. Preßmotor (schwach)	condensator clamp motor (low)	condensateur de ml (faible)
C 3	Kondens. Preßmotor (Stark)	condensator clamp motor (high)	condensateur de ml (fort)
C 4	Kondens. Preßmotor (Rücklauf)	condensator clamp motor (return)	condensateur de ml (retour)
C 5	Schutzkondensator	voltage condensator	condensateur de protection
C 6	Kondens. Verzögerung	condensator	condensateur de temporisation
C 7	Kondens. Relais	condensator for time	condensateur de relais
C 8	Kondens. Verzögerung Presse	condensator for clamp-timer	condensateur de temporisation de presse
C 9	Kondensatorkombination	condensator combination	combinaison de condensateurs
F 1	Überlastungsschutz	overland-switch	disjoncteur
F 2	Überlastungsschutz P. Motor	overload-switch clamp mbt	disjoncteur de protection du moteur
F 3 - F 4	Sicherung Trafo	fuse	fusible
F 5	Sicherung für Preßmotor	fuse for clamp motor	fusible moteur de pression
H 1	Kontrolleuchte	pilot light	voyant de contrôle
H 2 - H 4	Lampe für Beleuchtung	bulb for cutting light.	lampes
K 1	Schütz Messer ab	contactor knife-down	contact.lame mouvem. en bas
K 2	Schütz Messer auf	contactor knife-up	contact.lame mouvem. en haut
K 3	Schütz Pressung ab	contactor clamp-down	"pression en mouvem. en bas
K 4	Schütz Pressung auf	contactor clamp-up	"pression en mouvem. en haut
K 5	Relais Einschaltsperr	relay non-repeat-operation	relais d'armement
K 6	Relais Verzögerung	relay time	relais de temporisation
K 11	Relais Drehrichtungskontrolle	relay control revolution	relais contrôle de révolution
K 12	Relais Drehrichtungskontrolle	relay control revolution	relais contrôle de révolution
M 1	Antriebmotor 1~	cutting motor 1-ph.	moteur de coupe monophasé
M 2	Antriebmotor 3~	cutting motor 3-ph.	moteur de coupe triphasé
M 3	Preßmotor	clamp motor 1-ph.	moteur de pression monophasé
Q 1	Hauptschalter.	mainswitch	interrupteur principal
Q 2	Sicherungsblock	fluse	fusible
R	Schutzwiderstand	resistor clamp switch	résistance interr. de pression
R 1	Vorwiderstand	resistor relay-coil	résistance relais-bobine
R 2	Widerstand Verzögerung	resistor diode	résistance diode
S 1 - S 2	Drucktaster	button knife	touches de commande-coupe
S 3	Drucktast. Presse ab	actuator button clamp	touches de commande presse
S 4	Drucktaster Einschaltsperr	reset switch	contacteur armement + retour
S 5	Mikroschalter O.T.	microswitch o.t.	micro-contact arrêt haut
S 6	Mikroschalter U.T.	microswitch u.t.	micro-contact arrêt bas
S 7	Mikroschalter IS Presse aus	microswitch clamp off	micro-contact arrêt presse haut
S 8	Schlüsselschalter.	ignition lock	contacteur à cle
S 16	Sicherheitsvorrichtung	micro safety guard	micro-contact dispositif de sécurité
T 1	Transformator	transformer	transformateur
V 13	Gleichrichter Relais	diode	diode
V 13	Gleichrichter	diode	diode
Y 1	Magnet-Dremse Messer	solenoid cutting motor	electro-aimant de frein coupe
Y 2	Magnet-Dremse Pressung	solenoid clamp motor	electro-aimant de frein presse

036